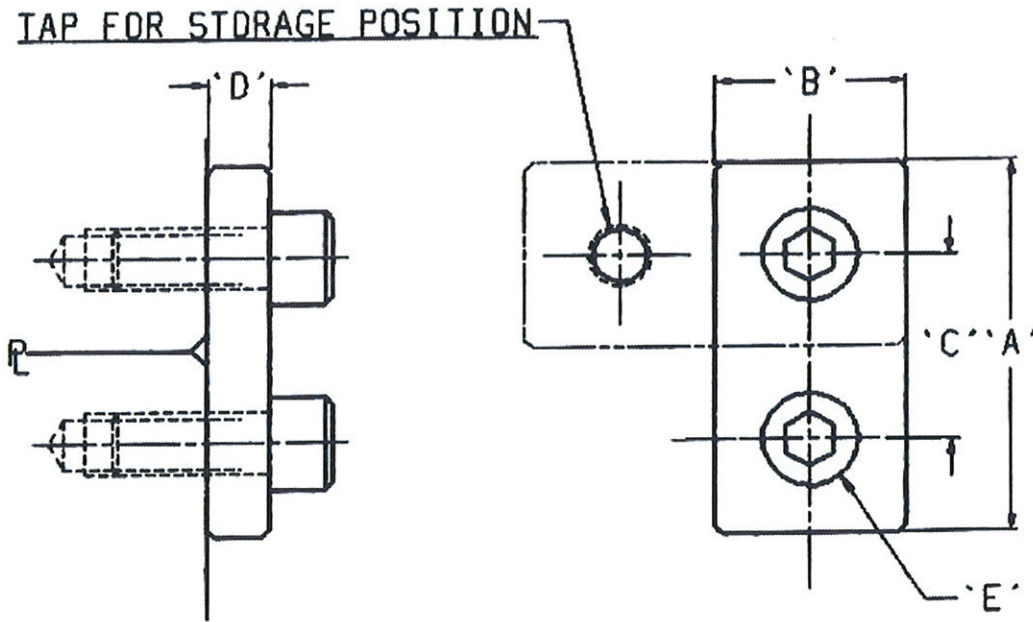


Canadian Head Office : 295 Alliance Rd Unit #12, Milton, Ont. Canada L9T 4W8

KTM Mould Straps



Catalog Number	MOLD WEIGHT	*A	*B	C	*D	E
MS-3	0 TON TO 5 TON	3.00"	1.575"	1.500"	0.450"	1/2" SHCS
MS-4	6 TON TO 15 TON	4.00"	1.950"	2.00"	0.800"	3/4" SHCS
MS-5	15 TON TO 30 TON	5.00"	2.350"	2.500"	1.200"	1" SHCS

Mold Weights are suggested values only, recommended in sets of 2-4

* Tolerances are ± 0.025 "

E - Clearance drilled for SHCS