

PG. 15



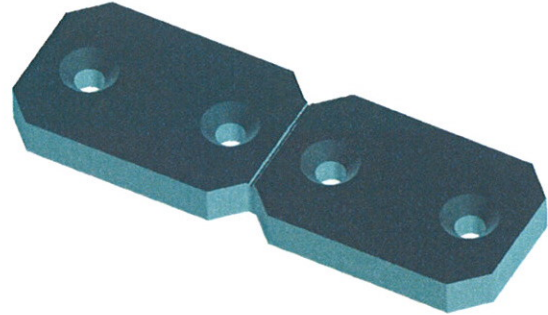
KTM Mould Components

Canadian Head Office : 295 Alliance Rd Unit #12, Milton, Ont. Canada L9T 4W8

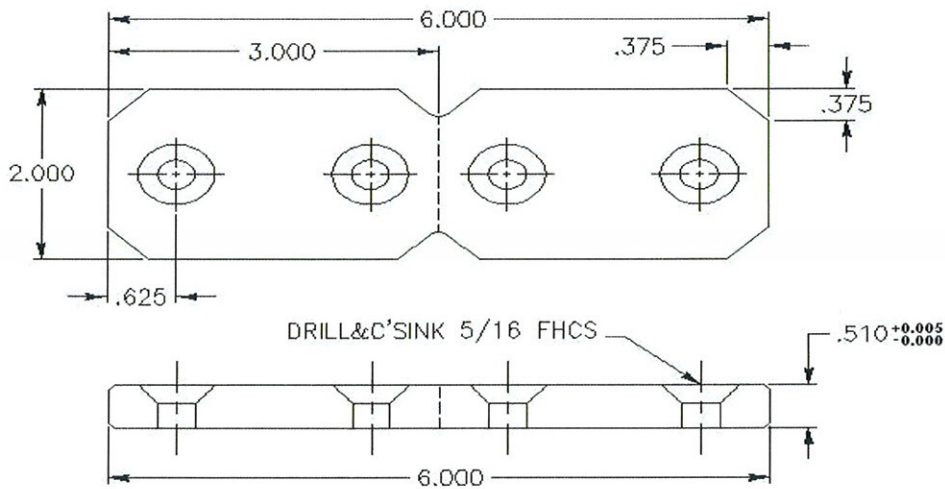
PRESSURE PADS

Note:

Case Harden 0.060" Deep to 38-42 RC
Finish: Two Sides Pre-Ground Finished
All Pads have pre-scribed split line
For easy 3" inch length.



KTM-PP-2x6



**Custom Pressure Pads Available; Tailor Made To Your Specification.
Call For More Information**