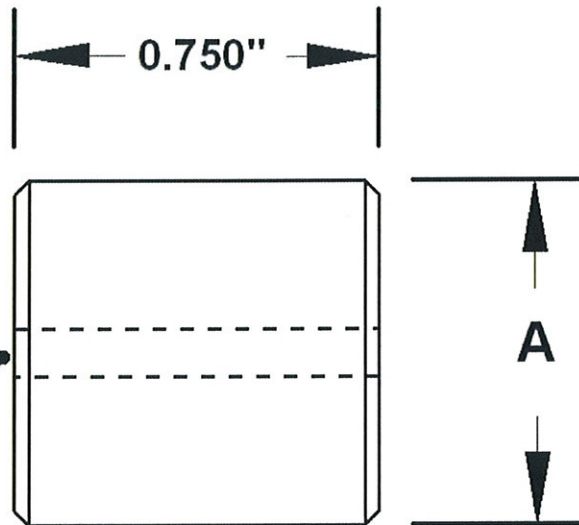
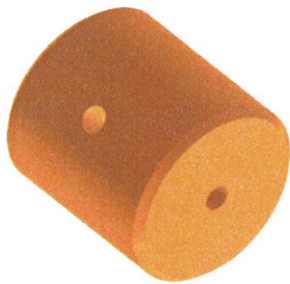
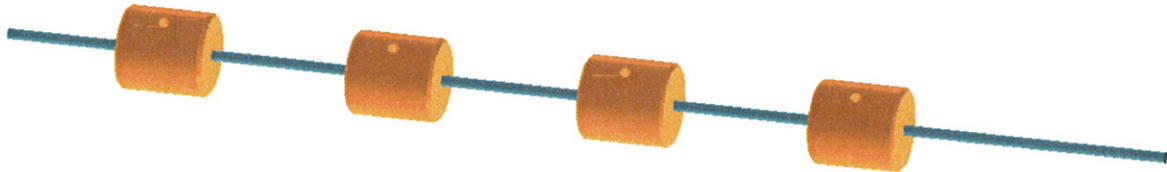




KTM Mould Components

Canadian Head Office : 295 Alliance Rd Unit #12, Milton, Ont. Canada L9T 4W8

KTM Water Diverters



10 - 24 Set Screw Included

Catalog Number	A	Notes
WD-1/4	0.432"	1/4 NPT Water Line
WD-3/8	0.557"	3/8 NPT Water Line
WD-3/8B	0.573"	3/8 NPT Water Line
WD-1/2	0.713"	1/2 NPT Water Line
WD-3/4	0.932"	3/4 NPT Water Line

Note:

All diverters are made of solid brass, with pre-drilled through holes and come complete with 10-24 set screw mounted for locking.