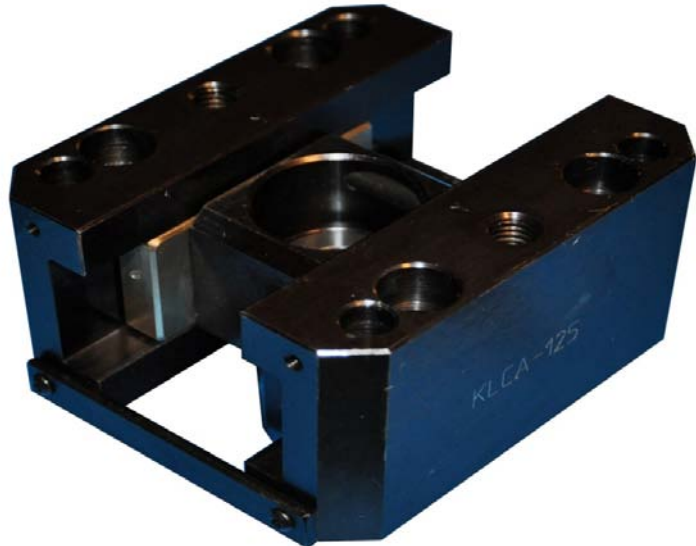


Canadian Head Office: 530 Martin Street Unit 11, Milton, On. Canada L9T 3H6
 Phone: (905) 878-3788 Fax: (905) 878-0900 www.kingstool.com

KTM Lifter Carriage Assembly.

KLCA units allow users to tune height for proper lifter rod fitting.

Pivoting Slider allows installation and assembly with lifter rod angle.



Imperial Rod Sizes

Catalog Number	For Lifter Rod Dia
KLCA-75	0.750
KLCA-100	1.000
KLCA-125	1.250
KLCA-150	1.500

Metric Rod Sizes

Catalog Number	For Lifter Rod Dia
KLCA-M-20	20mm
KLCA-M-25	25mm
KLCA-M-30	30mm
KLCA-M-35	35mm
KLCA-M-40	40mm

All units can be custom made with Angled Gibb Slots for Acceleration and Deceleration of Lifter
 Sample Call Out For 5deg Acceleration or Deceleration:

KLCA-75-05

KLCA-M-20-05

KLCA Units are Compatible and Interchangeable with Competitor's Assemblies.

3D Cad Files Available, Detail Catalog page coming Soon.

Please Contact Us For Further Details and Lead Time.