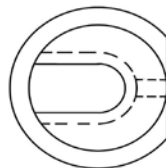
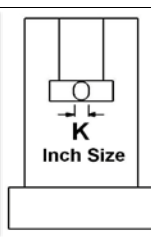
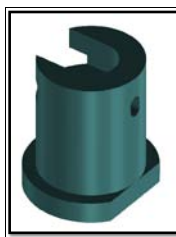
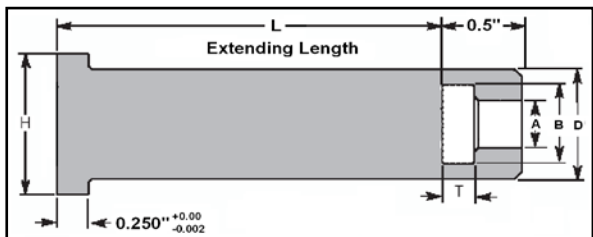


# KTM CUSTOM IMPERIAL PIN EXTENSIONS

\* CUSTOMIZE EXTENSION LENGTH \*ADD DOUBLE LOCK SYSTEM \*ADD COUNTER BORE INSIDE OF SLEEVE EXTENSION FOR PIN EXTENSION CLEARANCE \*CUSTOM GANG EXTENSIONS

ALL EXTENSIONS & DIMENSIONS CAN BE CUSTOMIZED AND TAILOR MADE TO YOUR SPECIFICATION AND DESIGN NEEDS

KTM Office: (905) 878-3788 Fax: (905) 878-0900 www.kingstool.com



## Optional Double Lock (DL)

All Extensions can come with an optional Double Locking System.

Slot for locking of Pin.

D Lock on head of extension to lock extension in plate.

\*\*Locking System can be Customized\*\*

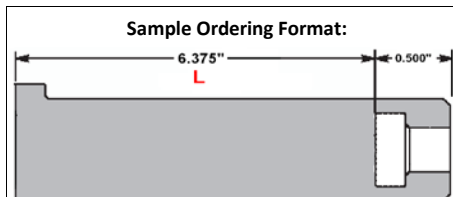
Catalog No.

Optional Locking System

**KTMPE \*\* - L - DL**

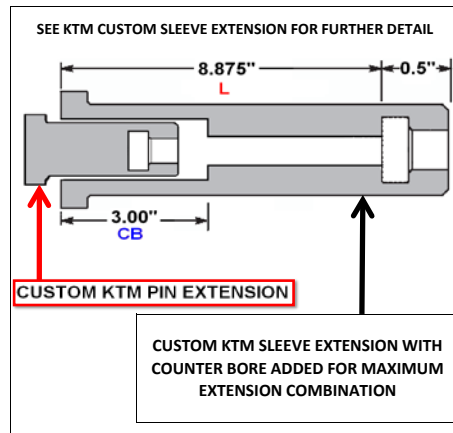
Indicate Extending Length

Ordering Format



Extending a 1/2 Ejector Pin by 6.375"  
Call Out: KTMPE33 - 6.375

Extending a 1/2 Ejector Pin by 6.375" with Double Lock  
Call Out: KTMPE33 - 6.375 - DL



CUSTOM KTM PIN EXTENSION

CUSTOM KTM SLEEVE EXTENSION WITH COUNTER BORE ADDED FOR MAXIMUM EXTENSION COMBINATION

EJP To Be Extended	KTM PIN EXTENSION CAT NO.	L	Optional Double Lock System	Pin Extension Spec					K Inch Size
				D	A	B	T	H	
				(+0.000) (-0.002)	(+0.005) (-0.000)	(+0.005) (-0.000)	(+0.002) (-0.000)	(+0.000) (-0.010)	
3/32	KTMPE7	L	Opt. DL	0.5	0.099	0.260	0.126	0.75	0.067
7/64	KTMPE8	L	Opt. DL	0.5	0.114	0.260	0.126	0.75	0.067
1/8	KTMPE9	L	Opt. DL	0.5	0.130	0.260	0.126	0.75	0.067
9/64	KTMPE10	L	Opt. DL	0.5	0.146	0.260	0.126	0.75	0.067
5/32	KTMPE11	L	Opt. DL	0.5	0.161	0.291	0.157	0.75	0.1
11/64	KTMPE12	L	Opt. DL	0.625	0.177	0.354	0.189	0.875	0.1
3/16	KTMPE13	L	Opt. DL	0.625	0.193	0.385	0.189	0.875	0.1
13/64	KTMPE14	L	Opt. DL	0.625	0.208	0.385	0.189	0.875	0.1
7/32	KTMPE15	L	Opt. DL	0.625	0.224	0.416	0.189	0.875	0.1
15/64	KTMPE16	L	Opt. DL	0.625	0.239	0.416	0.189	0.875	0.1
1/4	KTMPE17	L	Opt. DL	0.625	0.255	0.448	0.189	0.875	0.1
17/64	KTMPE18	L	Opt. DL	0.625	0.271	0.448	0.251	0.875	0.13
9/32	KTMPE19	L	Opt. DL	0.625	0.286	0.448	0.251	0.875	0.13
19/64	KTMPE20	L	Opt. DL	0.875	0.302	0.510	0.251	1.125	0.13
5/16	KTMPE21	L	Opt. DL	0.875	0.318	0.510	0.251	1.125	0.13
21/64	KTMPE22	L	Opt. DL	0.875	0.333	0.573	0.251	1.125	0.13
11/32	KTMPE23	L	Opt. DL	0.875	0.349	0.573	0.251	1.125	0.13
23/64	KTMPE24	L	Opt. DL	0.875	0.364	0.635	0.251	1.125	0.13
3/8	KTMPE25	L	Opt. DL	0.875	0.380	0.635	0.251	1.125	0.13
25/64	KTMPE26	L	Opt. DL	0.875	0.396	0.630	0.251	1.125	0.13
13/32	KTMPE27	L	Opt. DL	1	0.411	0.698	0.251	1.25	0.13
27/64	KTMPE28	L	Opt. DL	1	0.427	0.698	0.251	1.25	0.13
7/16	KTMPE29	L	Opt. DL	1	0.443	0.698	0.251	1.25	0.13
29/64	KTMPE30	L	Opt. DL	1	0.458	0.713	0.251	1.25	0.13
15/32	KTMPE31	L	Opt. DL	1	0.474	0.760	0.251	1.25	0.13
31/64	KTMPE32	L	Opt. DL	1	0.489	0.760	0.251	1.25	0.13
1/2	KTMPE33	L	Opt. DL	1	0.505	0.760	0.251	1.25	0.13
17/32	KTMPE34	L	Opt. DL	1	0.536	0.791	0.251	1.25	0.13
9/16	KTMPE35	L	Opt. DL	1	0.568	0.823	0.251	1.25	0.13
5/8	KTMPE37	L	Opt. DL	1.25	0.630	0.885	0.251	1.5	0.13
11/16	KTMPE39	L	Opt. DL	1.25	0.693	0.948	0.251	1.5	0.13
3/4	KTMPE41	L	Opt. DL	1.25	0.755	1.010	0.251	1.5	0.13
7/8	KTMPE45	L	Opt. DL	1.5	0.880	1.135	0.251	1.75	0.13
1	KTMPE47	L	Opt. DL	1.5	1.005	1.260	0.251	1.75	0.13

Pairing KTM Sleeve Extension

KTMSE13

KTMSE15

KTMSE17

KTMSE21

KTMSE23

KTMSE25

KTMSE29

KTMSE33

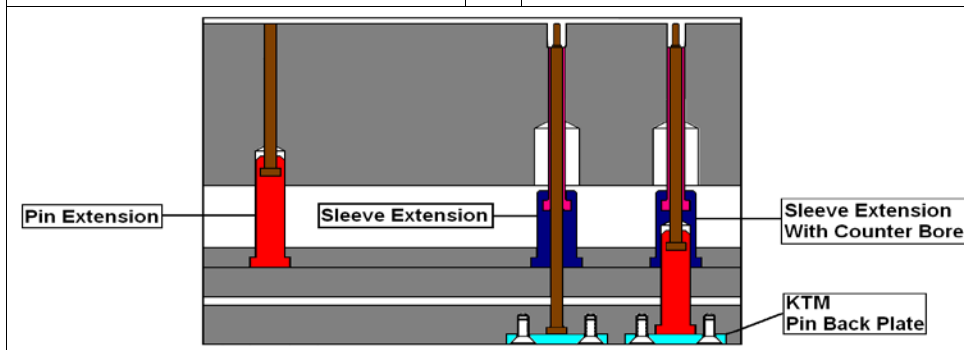
KTMSE37

KTMSE39

KTMSE41

KTMSE45

KTMSE47



REV02-030911

Notes: KTM New Standards as of March 2011  
As of REV02-03092011 \*\* Modified D & H Dimension For KTMPE35  
As of REV02-03092011 \* New Extensions: KTMPE7, KTMPE8, KTMPE26, KTMPE28, KTMPE30, KTMPE32, KTMPE34

Contact [mchan@kingstool.com](mailto:mchan@kingstool.com) For Further Information.

Custom Metric Pin Extension Available

KTM CUSTOM IMPERIAL PIN EXTENSIONS  
Allow 2-1/2 Weeks for Custom Orders. Rush Delivery Available

