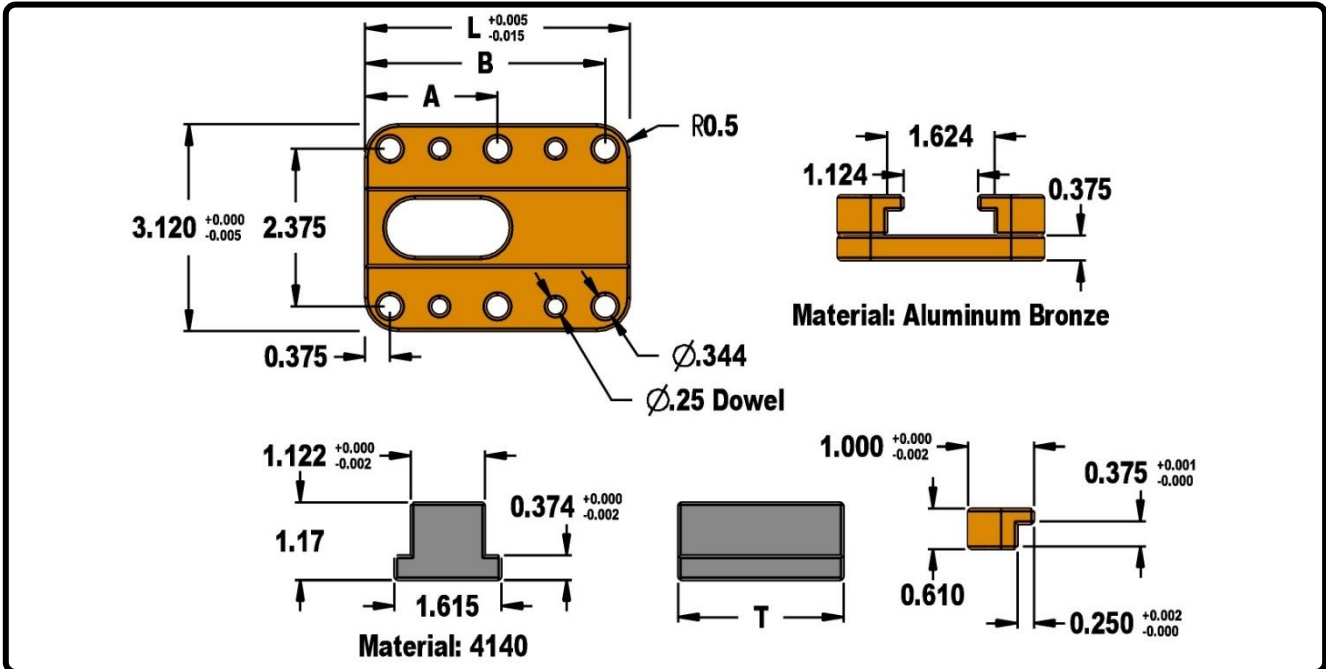


Mould Components

KTM Canada Head Office: 16-342 Bronte St. South, Milton, ON Canada, L9T 5B7
 Phone: (905) 878-3788 Fax: (905) 878-0900 www.kingstool.com

KTM Gib Assembly

Material: Aluminum Bronze, P20



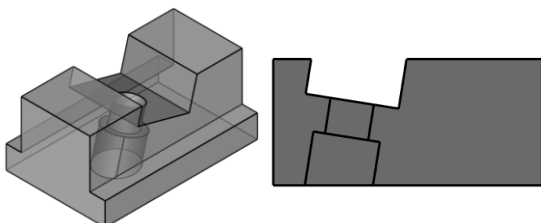
| Catalogue Name | A | B | L | T |
|----------------|------|-------|-----|-----|
| KTM-GA-3.0 | - | 2.625 | 3.0 | 2.0 |
| KTM-GA-3.5 | - | 3.125 | 3.5 | 2.5 |
| KTM-GA-4.0 | 2 | 3.625 | 4.0 | 2.5 |
| KTM-GA-4.5 | 2.25 | 4.125 | 4.5 | 2.5 |

Features:

- Gib Assembly Includes:
 - 2 L-Gibs, 1 Base Plate, 1 T-Nut
- Assembly comes pre-doweled and pre-drilled clearance for mounting screws
- Base plate is machined with thru hole for ease of assembly
- Tolerances +/- 0.010" unless otherwise specified



KTM Custom T-Nuts



Gib Assemblies can be order with custom T-Nuts to fit in KTM Gib Assemblies. KTM will pre-mill your lifter rod angle slot and pre counter-bore for your SHC screw. Your Gib Assembly will come complete ready to use.

Please contact us for further information