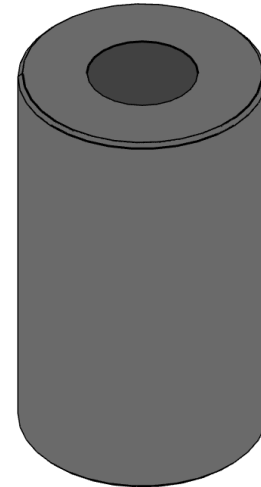
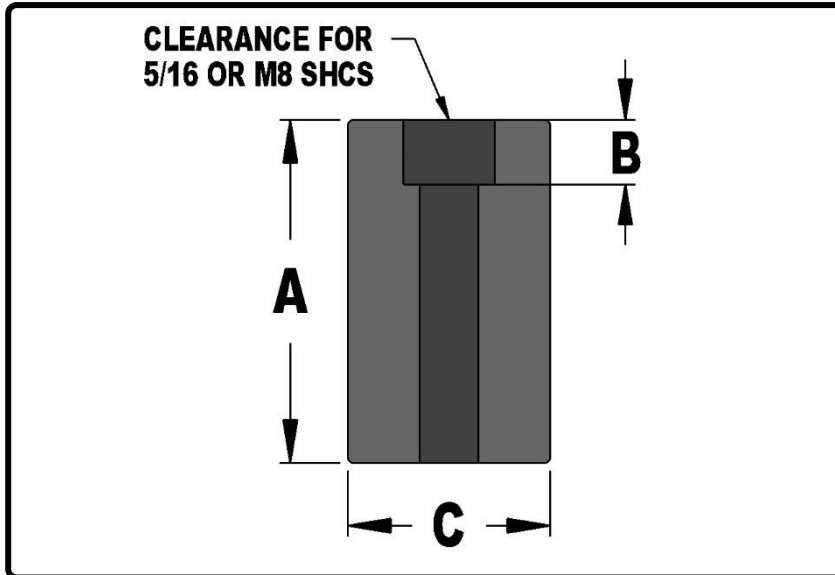


Mould Components

KTM Canada Head Office: 16-342 Bronte St. South, Milton, ON Canada, L9T 5B7
 Phone: (905) 878-3788 Fax: (905) 878-0900 www.kingstool.com

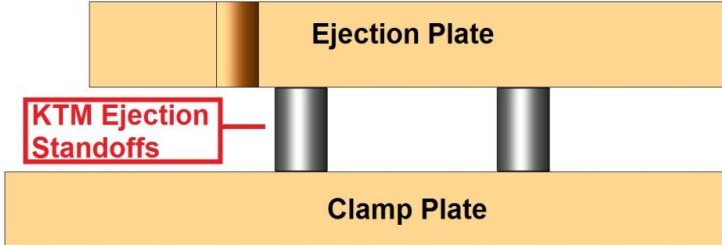
KTM Ejection Standoff & Ejection Stops

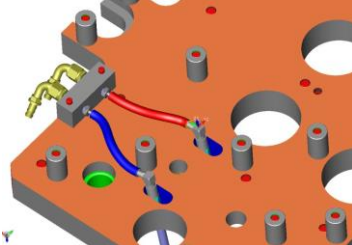
Material: CRS



Catalogue Name	A	B	C
KTMEJS-2.0	2.000"	0.375"	1.1875"
KTMEJS-2.5	2.500"	0.375"	1.1875"

Note: Tolerance on A Dimension +0.005"/-0.000"
 All other Dimensions +/- 0.010"





KTM Ejector Standoffs can be used to provide clearance between Ejection Plate and Clamp Plate for Waterline Hoses & Components. In addition KTM Ejection Standoffs can be used on top of Retainer Plates as Ejection Stops.

Custom Sizes Available. Please contact KTM for further details.