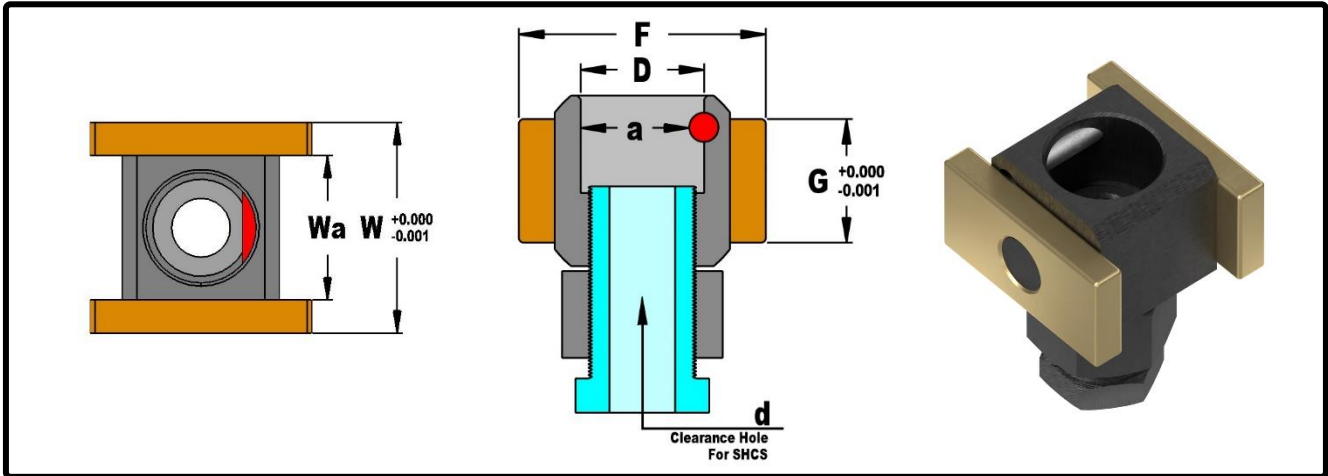


# Mold Components

KTM Canada Head Office: 16-342 Bronte St. South, Milton, ON Canada, L9T 5B7  
 Phone: (905) 878-3788 Fax: (905) 878-0900 Email: Info@kingstool.com Website: www.kingstool.com

## KTM Standard Slider Swivel Assembly

Material: 4140, Aluminum Bronze

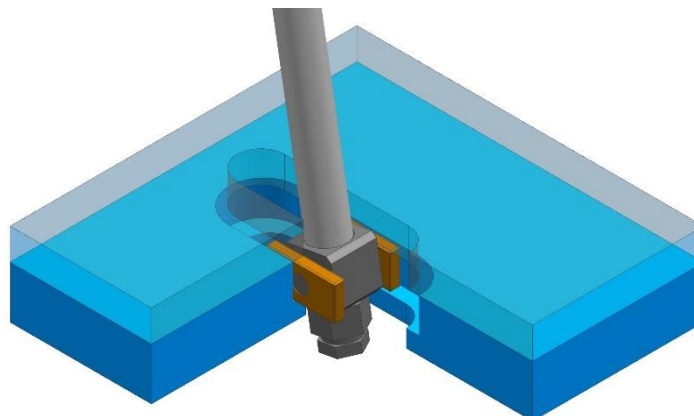


Imperial (Inch)							
Catalogue Name	D	a	d	W	Wa	F	G
625-AB-Swivel	0.626"	0.531"	5/16" SHCS	1.417"	0.827"	1.8"	0.945"
75-AB-Swivel	0.750"	0.630"	3/8" SHCS	1.802"	1.203"	1.8"	1.000"
100-AB-Swivel	1.000"	0.880"	1/2" SHCS	1.902"	1.303"	2.0"	1.000"
125-AB-Swivel	1.250"	1.125"	1/2" SHCS	2.200"	1.400"	2.4"	1.200"
150-AB-Swivel	1.500"	1.350"	5/8" SHCS	2.750"	1.950"	3.2"	1.500"

Metric (mm)							
Catalogue Name	D	a	d	W	Wa	F	G
M16-AB-Swivel	16mm	13mm	M8 SHCS	36mm	21mm	45mm	24mm
M20-AB-Swivel	20mm	17mm	M10 SHCS	43mm	28mm	45mm	24mm
M25-AB-Swivel	25mm	22mm	M12 SHCS	48mm	33mm	50mm	26mm
M30-AB-Swivel	30mm	27mm	M12 SHCS	55mm	38mm	60mm	30mm
M35-AB-Swivel	35mm	31mm	M12 SHCS	64mm	44mm	70mm	34mm
M40-AB-Swivel	40mm	36mm	M16 SHCS	70mm	50mm	80mm	38mm

For Graphite Impregnated Aluminum Bronze, add G between AB and Swivel in the catalogue name.  
 Example: 75-AB-G-Swivel

### Features:



KTM Standard Slider Swivel conveniently sits between ejection and retainer plates and allows free adjustment to align with Lifter Rod.

**CONTACT KTM TO REQUEST FOR 3D FILES OR FOR CUSTOM LIFTER CARRIAGE ANGLES**