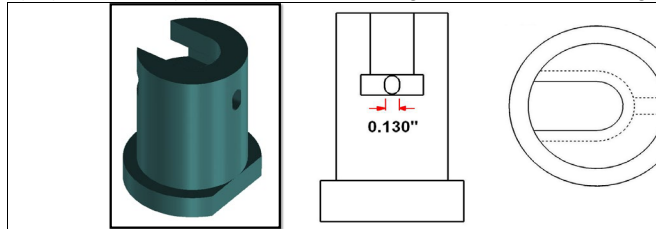
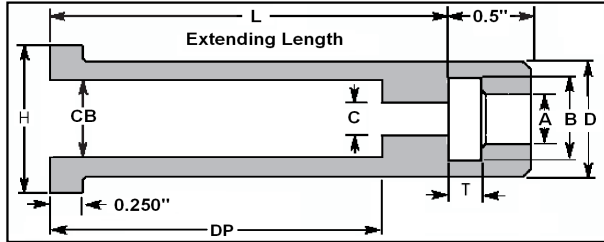


## KTM CUSTOM IMPERIAL SLEEVE EXTENSIONS

\* CUSTOMIZE EXTENSION LENGTH UP TO 30 Inches \*ADD DOUBLE LOCK SYSTEM \*ADD COUNTER BORE INSIDE OF SLEEVE EXTENSION FOR PIN EXTENSION CLEARANCE \*CUSTOM GANG EXTENSIONS  
**ALL EXTENSIONS & DIMENSIONS CAN BE CUSTOMIZED AND TAILOR MADE TO YOUR SPECIFICATION AND DESIGN NEEDS**

KTM Office: (905) 878-3788 Fax: (905) 878-0900 Email: Info@kingstool.com Website: www.kingstool.com



**Optional Double Lock ( DL )**

All Extensions can come with an optional Double Locking System.

0.130" slot for locking of Pin.

D Lock on head of extension to lock extension in plate.

**\*\*Locking System can be Customized\*\***

Sleeve Size To Be Extended		KTM SLEEVE EXTENSION CAT NO.	L	Optional Locking System	Optional Counter Bore	DP	KTM Sleeve Extension Spec						
Sleeve OD	Sleeve ID						D	A	B	T	C	H	CB
							(+0.00)	(+0.005) (-0.000)	(+0.005) (-0.000)	(+0.002) (-0.000)	(+0.03) (-0.00)	(+0.000) (-0.010)	(+0.020) (-0.020)
3/16	3/32	KTMSE13	L	Opt. DL		5/8	0.193	0.385	0.189	0.170	0.875		
3/16	3/32	KTMSE13B	L	Opt. DL	With CB	*DP	7/8	0.193	0.385	0.189	0.170	1.125	0.560
7/32	1/8	KTMSE15	L	Opt. DL		5/8	0.224	0.416	0.189	0.170	0.875		
7/32	1/8	KTMSE15B	L	Opt. DL	With CB	*DP	7/8	0.224	0.416	0.189	0.170	1.125	0.560
1/4	5/32	KTMSE17	L	Opt. DL		5/8	0.255	0.448	0.189	0.170	0.875		
1/4	5/32	KTMSE17B	L	Opt. DL	With CB	*DP	7/8	0.255	0.448	0.189	0.170	1.125	0.560
5/16	3/16	KTMSE21	L	Opt. DL		7/8	0.318	0.510	0.251	0.220	1.125		
5/16	3/16	KTMSE21B	L	Opt. DL	With CB	*DP	1	0.318	0.510	0.251	0.220	1.250	0.685
11/32	7/32	KTMSE23	L	Opt. DL		7/8	0.349	0.570	0.251	0.250	1.125		
11/32	7/32	KTMSE23B	L	Opt. DL	With CB	*DP	1	0.349	0.570	0.251	0.250	1.250	0.685
3/8	1/4	KTMSE25	L	Opt. DL		7/8	0.380	0.635	0.251	0.280	1.125		
3/8	1/4	KTMSE25B	L	Opt. DL	With CB	*DP	1	0.380	0.635	0.251	0.280	1.250	0.685
7/16	5/16	KTMSE29	L	Opt. DL		1	0.443	0.698	0.251	0.340	1.250		
7/16	5/16	KTMSE29B	L	Opt. DL	With CB	*DP	1 1/4	0.443	0.698	0.251	0.340	1.500	0.935
1/2	3/8	KTMSE33	L	Opt. DL		1	0.505	0.760	0.251	0.410	1.250		
1/2	3/8	KTMSE33B	L	Opt. DL	With CB	*DP	1 1/4	0.505	0.760	0.251	0.410	1.500	0.935
5/8	7/16	KTMSE37	L	Opt. DL		1 1/4	0.630	0.885	0.251	0.468	1.500		
5/8	7/16	KTMSE37B	L	Opt. DL	With CB	*DP	1 3/8	0.630	0.885	0.251	0.468	1.625	1.060
11/16	1/2	KTMSE39	L	Opt. DL		1 1/4	0.693	0.948	0.251	0.531	1.500		
11/16	1/2	KTMSE39B	L	Opt. DL	With CB	*DP	1 3/8	0.693	0.948	0.251	0.531	1.625	1.060
3/4	9/16	KTMSE41	L	Opt. DL		1 1/4	0.755	1.010	0.251	0.593	1.500		
3/4	9/16	KTMSE41B	L	Opt. DL	With CB	*DP	1 1/2	0.755	1.010	0.251	0.593	1.750	1.185
7/8	5/8	KTMSE45	L	Opt. DL		1 1/2	0.880	1.135	0.251	0.656	1.750		
7/8	5/8	KTMSE45B	L	Opt. DL	With CB	*DP	1 5/8	0.880	1.135	0.251	0.656	1.875	1.310
1	3/4	KTMSE47	L	Opt. DL		1 1/2	1.005	1.260	0.251	0.781	1.750		
1	3/4	KTMSE47B	L	Opt. DL	With CB	*DP	1 5/8	1.005	1.260	0.251	0.781	1.875	1.310

Pairing KTM Pin Extension
KTMPE7
KTMPE7
KTMPE9
KTMPE9
KTMPE11
KTMPE11
KTMPE13
KTMPE13
KTMPE15
KTMPE15
RKTMPE17
RKTMPE17
KTMPE21
KTMPE21
KTMPE25
KTMPE25
KTMPE29
KTMPE29
KTMPE33
KTMPE33
RKTMPE35
RKTMPE35
KTMPE37
KTMPE37
KTMPE41
KTMPE41

**Sample Ordering Format:**

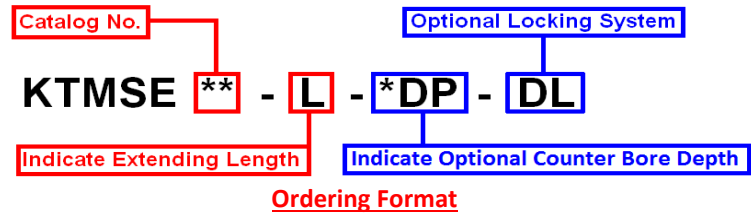
Extending a 11/16 OD Sleeve by 8.875"  
Call Out: KTMSE39 - 8.875

Extending a 11/16 OD Sleeve by 8.875" with Double Lock System  
Call Out: KTMSE39 - 8.875 - DL

**CUSTOM KTM PIN EXTENSION**

Extending a 11/16 OD Sleeve by 8.875" with Counter Bore 3.0" Deep  
Call Out: KTMSE39B - 8.875 - 3.0DP

KTM CUSTOM IMPERIAL SLEEVE EXTENSIONS  
Allow 2 1/2 Weeks for Custom Orders. Rush Delivery Available



Contact info@kingstool.com For Further Information  
 Custom Metric Sleeve Extensions Available

**NEW REVISION AS MARCH 2015**