

Mold Components

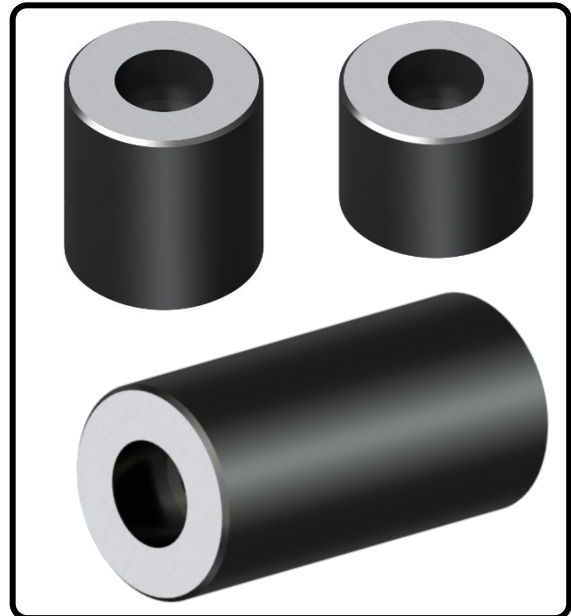
KTM Canada Head Office: 16-342 Bronte St. South, Milton, ON Canada, L9T 5B7
 Phone: (905) 878-3788 Fax: (905) 878-0900 Email: Info@kingstool.com Website: www.kingstool.com

KTM Stop buttons / Ejector box stops / Stop spacers

Imperial:

Material: Round Bar Steel
Grinding Stock: 0.015" grind stock on nominal dimension
Thickness Tolerance: +0.005"/-0.000"
 Prevents ejector plates from crashing into mold.

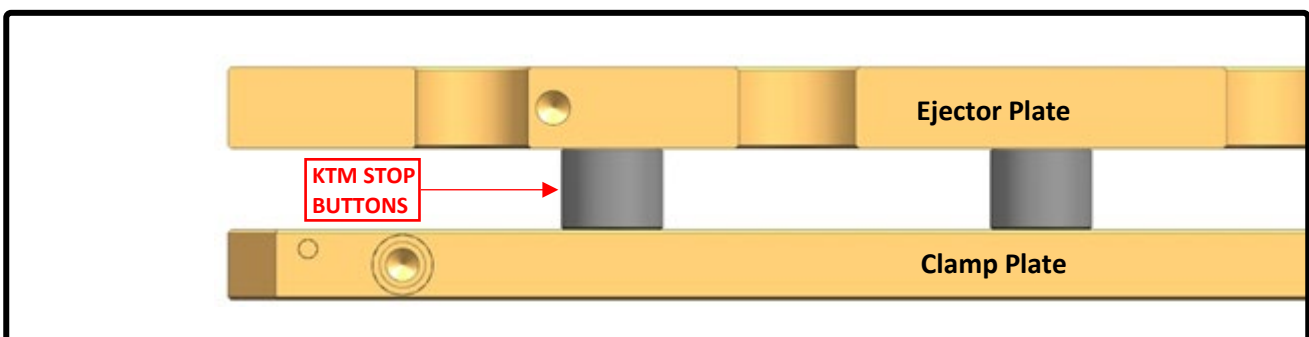
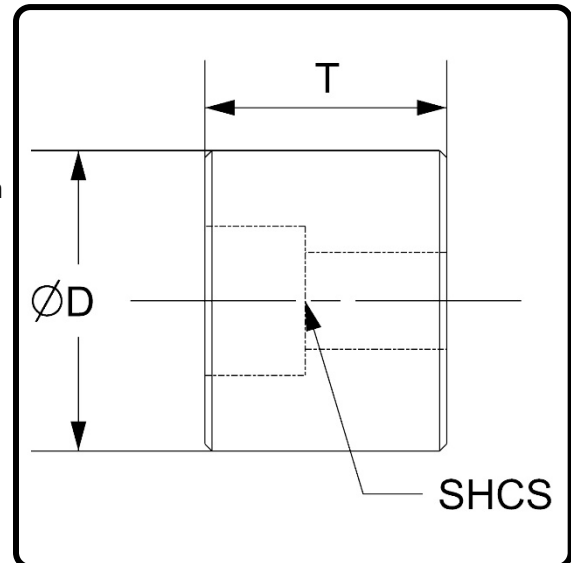
Catalog Name	D	T	Clearance for SHCS
KTM-SB-0.375	0.375"	0.375"	1/4 SHCS
KTM-SB-1.0	1.25"	1.000"	3/8 SHCS
KTM-SB-2.0		2.000"	
KTM-SB-2.5		2.500"	
KTM-SB-3.0		3.000"	
KTM-SB-4.0	1.50"	4.000"	



Metric:

Material: Round Bar Steel
Grinding Stock: 0.4mm grind stock on nominal dimension
Thickness Tolerance: +0.13mm/-0.00mm
 Prevents ejector plates from crashing into mold.

Catalog Name	D	T	Clearance for SHCS
KTM-SB-10	20mm	10mm	M6 SHCS
KTM-SB-25	32mm	25mm	M10 SHCS
KTM-SB-50		50mm	
KTM-SB-75		75mm	
KTM-SB-100	38mm	100mm	



Contact KTM for 3D Data & Custom Sizes