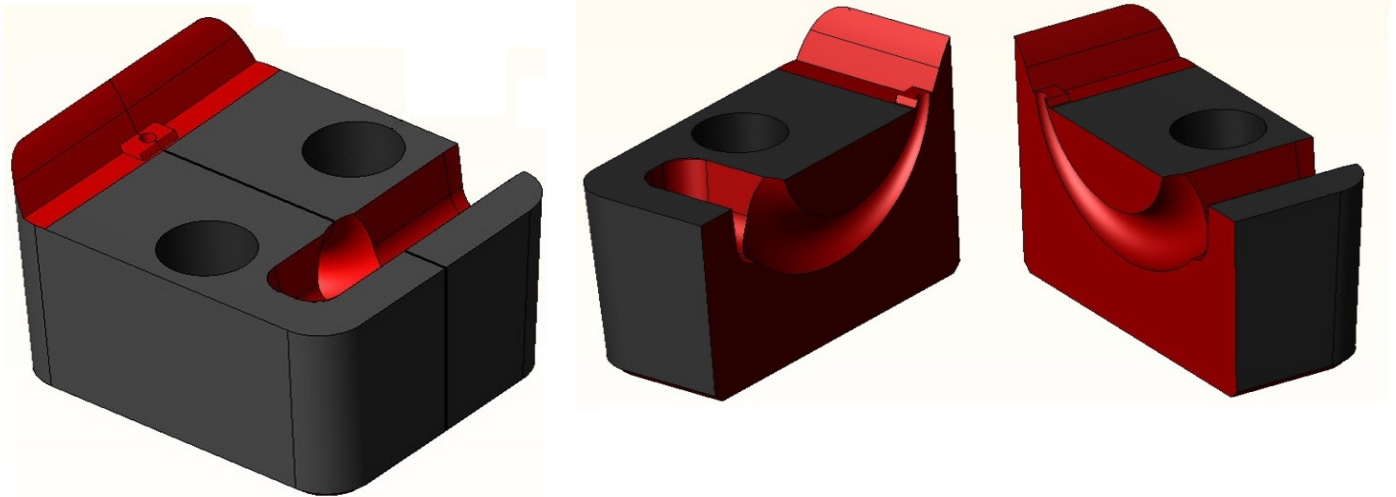


Mold Components

KTM Canada Head Office: 16 - 342 Bronte Street S, Milton, On. Canada L9T 5B7
 Phone: (905) 878-3788 Fax: (905) 878-0900 Email: Info@kingstool.com Website: www.kingstool.com

KTM Custom Split Cashew Gate Inserts Machining Service

Send KTM your Custom Split Cashew Gate Insert 3D file and KTM will custom cut to your specification and deliver to your shop completely finished and ready to be drop into your mold.



Description
P20 Split Cashew Insert Set
H13 RC 48-52 Split Cashew Insert Set

Material: Certified North American P20 or H13
 Pricing subject to change depending on configuration

Ordering: Send us your 3D File and specify Material

Standard Delivery is 3 Weeks to Door. Contact KTM for Faster Lead Times.

Custom Cut to your Specification