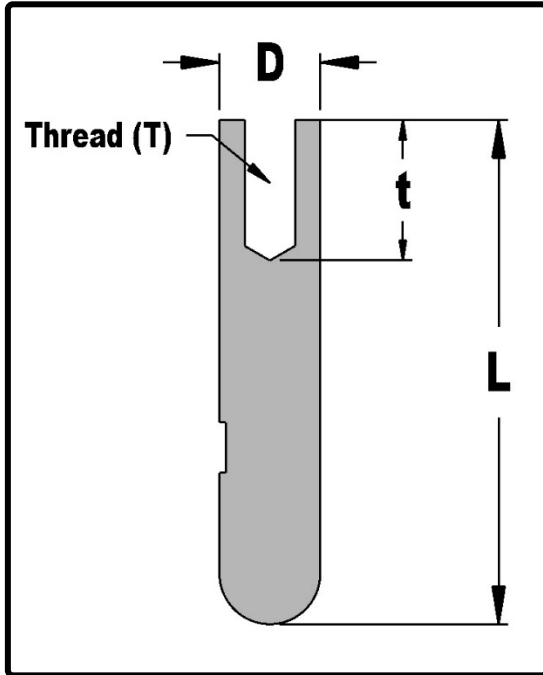


# Mold Components

KTM Canada Head Office: 16-342 Bronte St. South, Milton, ON Canada, L9T 5B7  
 Phone: (905) 878-3788 Fax: (905) 878-0900 Email: Info@kingstool.com Website: www.kingstool.com

## KTM Horn Pins (Custom Lengths)

**Material:** Case Hardened Shaft



**Sample Ordering Format:**

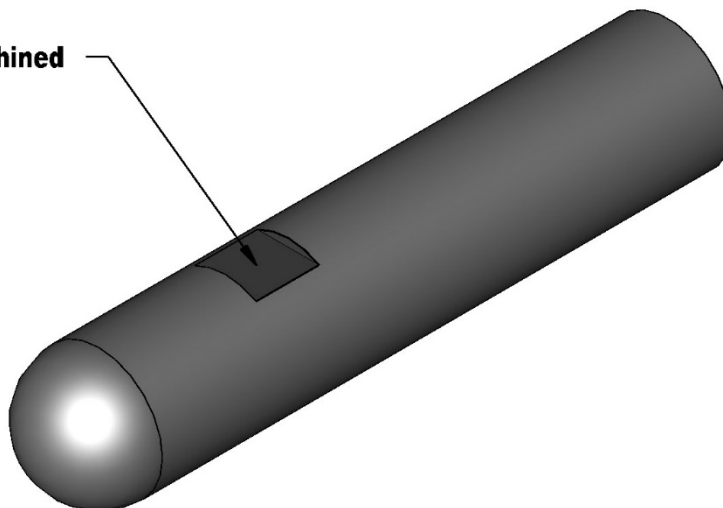
To order 0.75" diameter Horn Pin in 6.375" Inches length:

<b>Catalogue Name</b>		<b>Length</b>
↓	-	↓
<b>KTM-HP75</b>	-	<b>6.375</b>

Imperial (Inch)			
Catalogue Name	Diameter (D)	Thread (T)	Thread Depth (t)
KTM-HP75-L	0.75"	3/8-16 NC	15/16
KTM-HP100-L	1.00"	1/2-13 NC	1-1/4
KTM-HP125-L	1.25"	1/2-13 NC	1-1/4
KTM-HP150-L	1.50"	5/8-11 NC	1-9/16

Metric (mm)			
Catalogue Name	Diameter (D)	Thread (T)	Thread Depth (t)
KTM-HP16mm-L	16mm	M8x1.25 NC	20mm
KTM-HP20mm-L	20mm	M10x1.5 NC	25mm
KTM-HP25mm-L	25mm	M12x1.75 NC	30mm
KTM-HP30mm-L	30mm	M12x1.75 NC	30mm
KTM-HP40mm-L	40mm	M16x2 NC	40mm

Includes pre-machined flat for Wrench



### KTM CUSTOM HORN PIN SERVICE

Please allow 2.5 Weeks for Delivery; expedited service available.

**CONTACT KTM TO REQUEST FOR 3D FILES OR FOR CUSTOM HORN PIN**