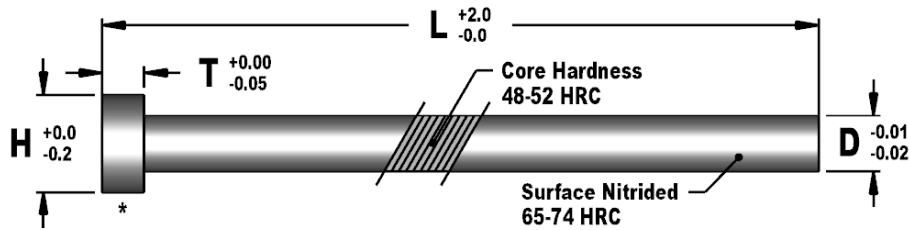


# Mold Component

KTM Canada Head Office: 16-342 Bronte Street South, Milton Ontario, L9T 5B7  
 Phone: (905) 878-3788 Fax: (905) 878-0900 Email: Info@kingstool.com Website: www.kingstool.com

## KTM METRIC DIN HARDEN NITRIDED EJECTOR PINS

Material: (1.2344, H13, SKD61)



**Sample Ordering Format:**

To order a 10mm diameter Ejector Pin in 200mm length:

Catalogue Name (L) Length

**EJPDIN100 - 200**

Catalogue Name	(D) Pin Diameter	(H) Head Diameter	(T) Head Thickness	(L) Length
EJPDIN015	1.5 mm	3.0 mm	1.5 mm	Standard & Custom Lengths Available
EJPDIN016	1.6 mm	3.0 mm	1.5 mm	
EJPDIN017	1.7 mm	3.0 mm	1.5 mm	
EJPDIN018	1.8 mm	3.0 mm	1.5 mm	
EJPDIN020	2.0 mm	4.0 mm	2.0 mm	
EJPDIN022	2.2 mm	4.0 mm	2.0 mm	
EJPDIN024	2.4 mm	5.0 mm	2.0 mm	
EJPDIN025	2.5 mm	5.0 mm	2.0 mm	
EJPDIN027	2.7 mm	5.0 mm	2.0 mm	
EJPDIN029	2.9 mm	5.0 mm	2.0 mm	
EJPDIN030	3.0 mm	6.0 mm	3.0 mm	
EJPDIN031	3.1 mm	6.0 mm	3.0 mm	
EJPDIN032	3.2 mm	6.0 mm	3.0 mm	
EJPDIN034	3.4 mm	6.0 mm	3.0 mm	
EJPDIN035	3.5 mm	7.0 mm	3.0 mm	
EJPDIN037	3.7 mm	7.0 mm	3.0 mm	
EJPDIN039	3.9 mm	7.0 mm	3.0 mm	
EJPDIN040	4.0 mm	8.0 mm	3.0 mm	
EJPDIN041	4.1 mm	8.0 mm	3.0 mm	
EJPDIN042	4.2 mm	8.0 mm	3.0 mm	
EJPDIN044	4.4 mm	8.0 mm	3.0 mm	
EJPDIN045	4.5 mm	8.0 mm	3.0 mm	
EJPDIN047	4.7 mm	8.0 mm	3.0 mm	
EJPDIN049	4.9 mm	8.0 mm	3.0 mm	
EJPDIN050	5.0 mm	10.0 mm	3.0 mm	
EJPDIN051	5.1 mm	10.0 mm	3.0 mm	
EJPDIN052	5.2 mm	10.0 mm	3.0 mm	
EJPDIN054	5.4 mm	10.0 mm	3.0 mm	
EJPDIN055	5.5 mm	10.0 mm	3.0 mm	
EJPDIN057	5.7 mm	10.0 mm	3.0 mm	
EJPDIN059	5.9 mm	10.0 mm	3.0 mm	
EJPDIN060	6.0 mm	12.0 mm	5.0 mm	

Catalogue Name	(D) Pin Diameter	(H) Head Diameter	(T) Head Thickness	(L) Length
EJPDIN061	6.1 mm	12.0 mm	5.0 mm	Standard & Custom Lengths Available
EJPDIN062	6.2 mm	12.0 mm	5.0 mm	
EJPDIN065	6.5 mm	12.0 mm	5.0 mm	
EJPDIN067	6.7 mm	12.0 mm	5.0 mm	
EJPDIN069	6.9 mm	12.0 mm	5.0 mm	
EJPDIN070	7.0 mm	12.0 mm	5.0 mm	
EJPDIN072	7.2 mm	12.0 mm	5.0 mm	
EJPDIN078	7.8 mm	12.0 mm	5.0 mm	
EJPDIN080	8.0 mm	14.0 mm	5.0 mm	
EJPDIN081	8.1 mm	14.0 mm	5.0 mm	
EJPDIN082	8.2 mm	14.0 mm	5.0 mm	
EJPDIN084	8.4 mm	14.0 mm	5.0 mm	
EJPDIN085	8.5 mm	14.0 mm	5.0 mm	
EJPDIN090	9.0 mm	14.0 mm	5.0 mm	
EJPDIN097	9.7 mm	14.0 mm	5.0 mm	
EJPDIN100	10.0 mm	16.0 mm	5.0 mm	
EJPDIN101	10.1 mm	16.0 mm	5.0 mm	
EJPDIN102	10.2 mm	16.0 mm	5.0 mm	
EJPDIN105	10.5 mm	16.0 mm	5.0 mm	
EJPDIN110	11.0 mm	16.0 mm	5.0 mm	
EJPDIN120	12.0 mm	18.0 mm	7.0 mm	
EJPDIN122	12.2 mm	18.0 mm	7.0 mm	
EJPDIN125	12.5 mm	18.0 mm	7.0 mm	
EJPDIN140	14.0 mm	22.0 mm	7.0 mm	
EJPDIN142	14.2 mm	22.0 mm	7.0 mm	
EJPDIN160	16.0 mm	22.0 mm	7.0 mm	
EJPDIN162	16.2 mm	22.0 mm	7.0 mm	
EJPDIN180	18.0 mm	24.0 mm	7.0 mm	
EJPDIN200	20.0 mm	26.0 mm	8.0 mm	
EJPDIN250	25.0 mm	32.0 mm	10.0 mm	
EJPDIN320	32.0 mm	40.0 mm	10.0 mm	

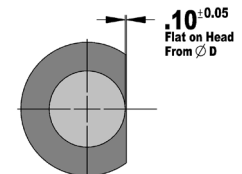
\* Bottom of the ejector pin is annealed

### Keyed Option Ejector Pin

KTM offers the option to supply ejector pins with anti-rotational flats. Add K after the catalogue name for Keyed ejector pin option.

Catalogue Name Keyed Option (L) Length

**EJPDIN100 - K - 200**



**CONTACT KTM FOR CUSTOM EJECTOR PINS & SIZES**