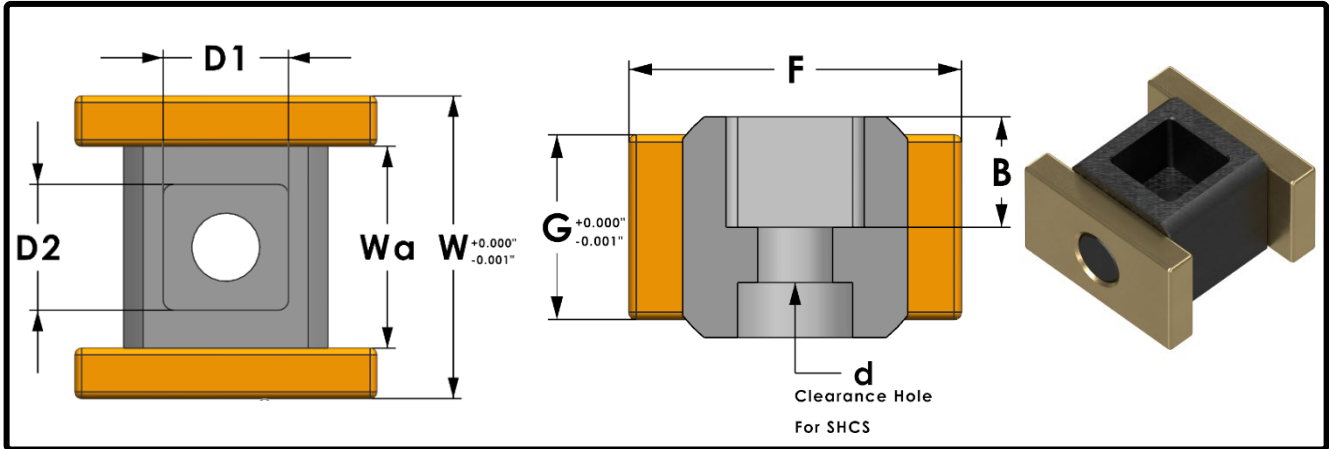


# Mold Components

KTM Canada Head Office: 16-342 Bronte St. South, Milton, ON Canada, L9T 5B7  
 Phone: (905) 878-3788 Fax: (905) 878-0900 Email: Info@kingstool.com Website: www.kingstool.com

## KTM Uni-lifter Swivel Assembly

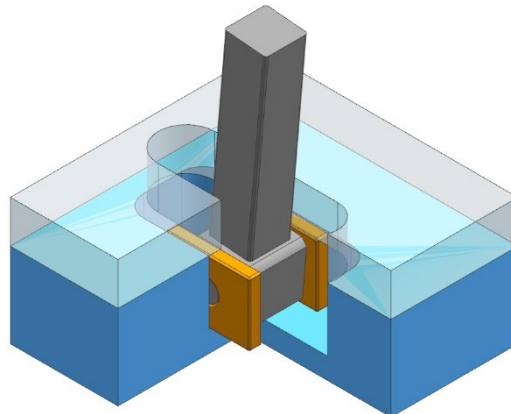
**Material: 4140, Aluminum Bronze**



Imperial (Inch)	D1	D2	B	d	W	Wa	F	G
<b>Catalogue Name</b>								
<b>75-AB-Swivel-UL</b>	0.75"	0.75"	0.6"	3/8 SHCS	1.802"	1.203"	1.8"	1.000"
<b>100-AB-Swivel-UL</b>	1.00"	1.00"	0.6"	1/2 SHCS	1.902"	1.303"	2.0"	1.000"

**For Graphite Impregnated Aluminum Bronze, add G between AB and Swivel in the catalogue name.  
 Example: 75-AB-G-Swivel-UL**

### Features:



**KTM Unilifter Swivel Assembly** conveniently sits between ejection and retainer plates and allows free adjustment to align with Unilifter.

**CONTACT KTM TO REQUEST FOR 3D FILES OR FOR CUSTOM LIFTER CARRIAGE ANGLES**