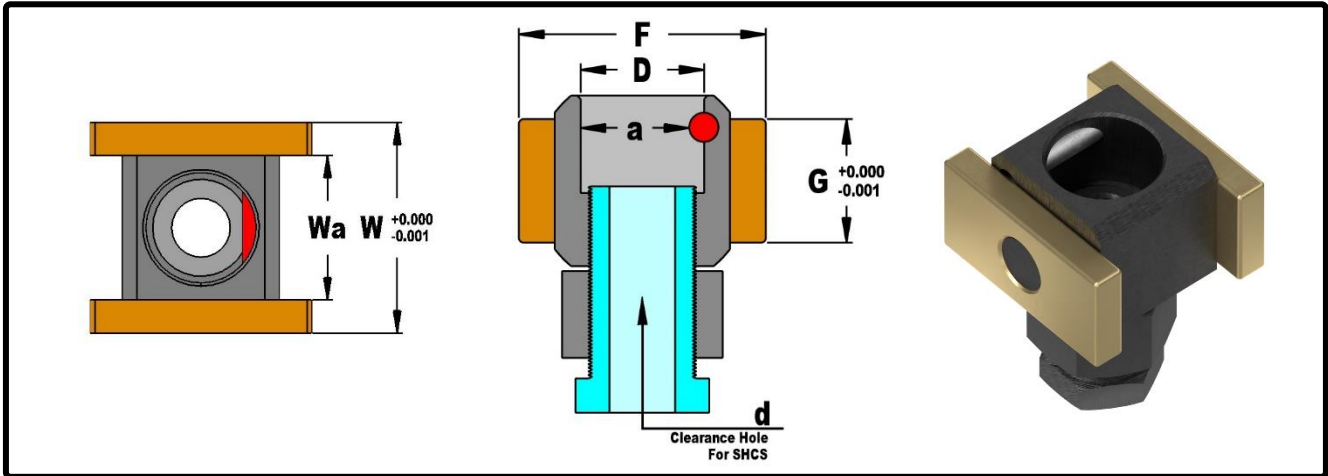


Mold Components

KTM Canada Head Office: 56 Steeles Ave. UNIT#35 Milton, ON Canada, L9T 4W9
 Phone: (905) 878-3788 Fax: (905) 878-0900 Email: Info@kingstool.com Website: www.kingstool.com

KTM Standard Slider Swivel Assembly

Material: 4140, Aluminum Bronze

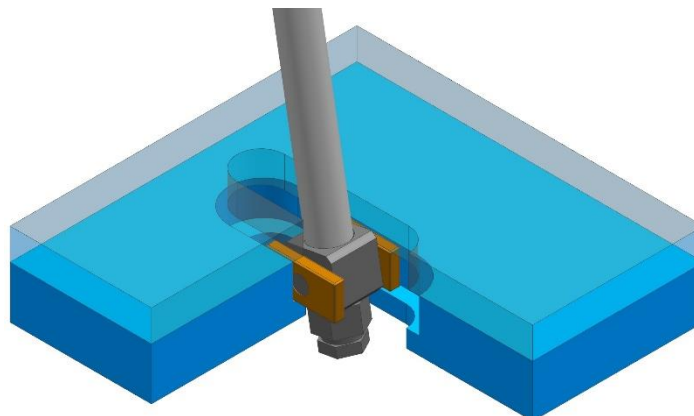


Imperial (Inch)							
Catalogue Name	D	a	d	W	Wa	F	G
625-AB-Swivel	0.626"	0.531"	5/16" SHCS	1.417"	0.827"	1.8"	0.945"
75-AB-Swivel	0.750"	0.630"	3/8" SHCS	1.802"	1.203"	1.8"	1.000"
100-AB-Swivel	1.000"	0.880"	1/2" SHCS	1.902"	1.303"	2.0"	1.000"
125-AB-Swivel	1.250"	1.125"	1/2" SHCS	2.200"	1.400"	2.4"	1.200"
150-AB-Swivel	1.500"	1.350"	5/8" SHCS	2.750"	1.950"	3.2"	1.500"

Metric (mm)							
Catalogue Name	D	a	d	W	Wa	F	G
M16-AB-Swivel	16mm	13mm	M8 SHCS	36mm	21mm	45mm	24mm
M20-AB-Swivel	20mm	17mm	M10 SHCS	43mm	28mm	45mm	24mm
M25-AB-Swivel	25mm	22mm	M12 SHCS	48mm	33mm	50mm	26mm
M30-AB-Swivel	30mm	27mm	M12 SHCS	55mm	38mm	60mm	30mm
M35-AB-Swivel	35mm	31mm	M12 SHCS	64mm	44mm	70mm	34mm
M40-AB-Swivel	40mm	36mm	M16 SHCS	70mm	50mm	80mm	38mm

For Graphite Impregnated Aluminum Bronze, add G between AB and Swivel in the catalogue name.
 Example: 75-AB-G-Swivel

Features:



KTM Standard Slider Swivel conveniently sits between ejection and retainer plates and allows free adjustment to align with Lifter Rod.

CONTACT KTM TO REQUEST FOR 3D FILES OR FOR CUSTOM LIFTER CARRIAGE ANGLES