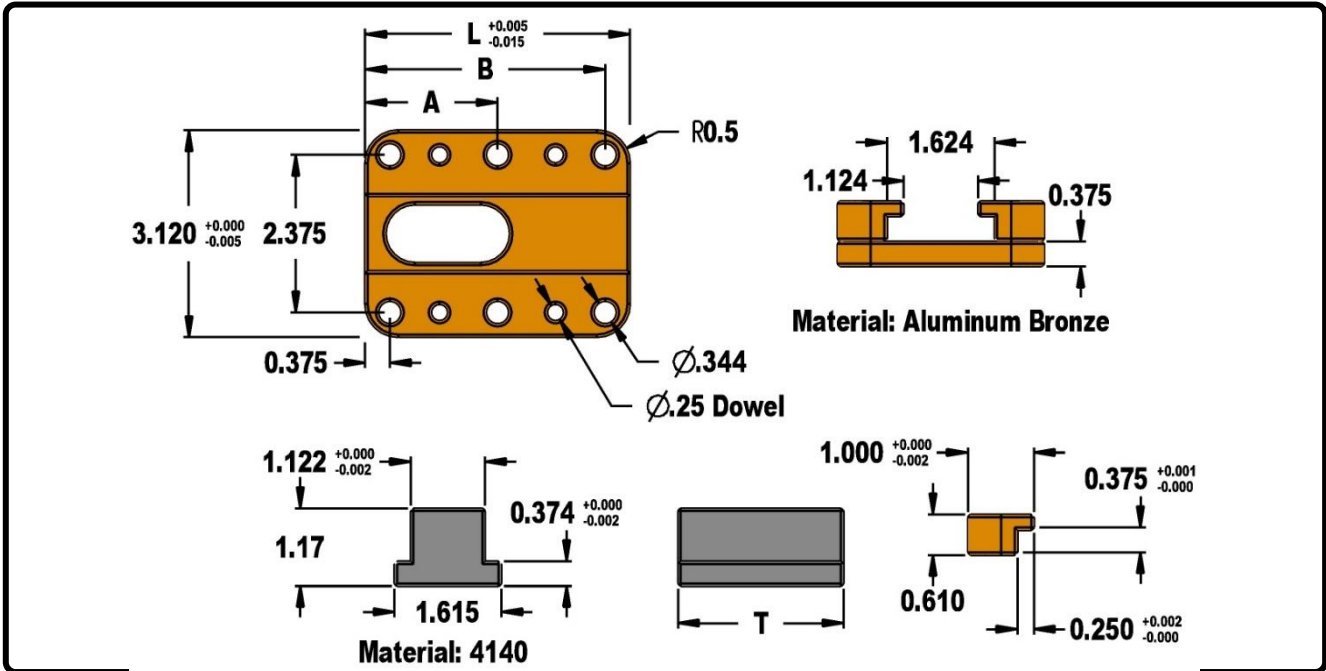


# Mold Components

KTM Canada Head Office: 56 Steeles Ave. UNIT#35 Milton, ON Canada, L9T 4W9  
 Phone: (905) 878-3788 Fax: (905) 878-0900 Email: Info@kingstool.com Website: www.kingstool.com

## KTM Gib Assembly

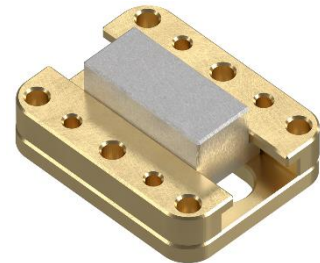
**Material: Aluminum Bronze, P20**



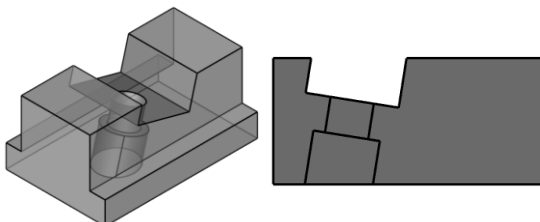
Catalogue Name	A	B	L	T
KTM-GA-3.0	-	2.625	3.0	2.0
KTM-GA-3.5	-	3.125	3.5	2.5
KTM-GA-4.0	2	3.625	4.0	2.5
KTM-GA-4.5	2.25	4.125	4.5	2.5

### Features:

- Gib Assembly Includes:
  - 2 L-Gibs, 1 Base Plate, 1 T-Nut
- Assembly comes pre-doweled and pre-drilled clearance for mounting screws
- Base plate is machined with thru hole for ease of assembly
- Tolerances +/- 0.010" unless otherwise specified



### KTM Custom T-Nuts



Gib Assemblies can be order with custom T-Nuts to fit in KTM Gib Assemblies. KTM will pre-mill your lifter rod angle slot and pre counter-bore for your SHC screw. Your Gib Assembly will come complete ready to use.

Please contact us for further information