

KTM CUSTOM JIS METRIC PIN EXTENSIONS

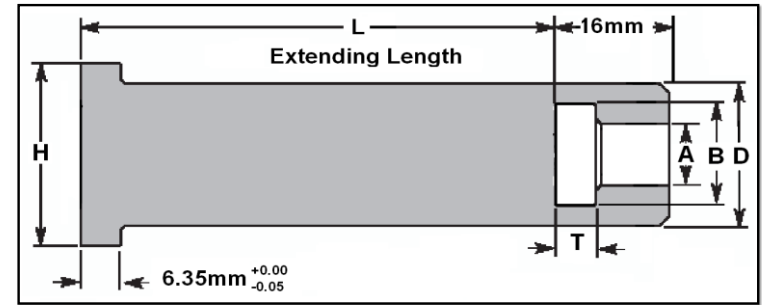
* CUSTOMIZE EXTENSION LENGTH UP TO 30 Inches *ADD DOUBLE LOCK SYSTEM *ADD COUNTER BORE INSIDE OF SLEEVE EXTENSION FOR PIN
ALL EXTENSIONS & DIMENSIONS CAN BE CUSTOMIZED AND TAILOR MADE TO YOUR SPECIFICATION AND DESIGN NEEDS
 KTM Office: (905) 878-3788 Fax: (905) 878-0900 Email: Info@kingstool.com Website: www.kingstool.com

Pin Extension Spec Metric Sizes

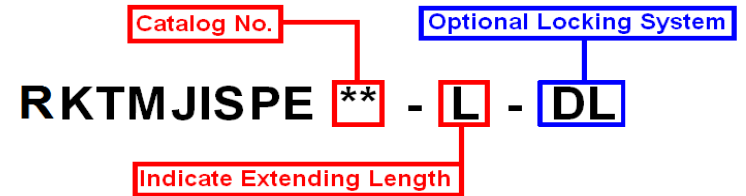
JIS EJP To Be Extended	KTM JIS PIN EXTENSION CAT NO.	L	Optional Double Lock System	D	A	B	T	H	K Inch Size
				(+0.000)	(+0.127) (-0.000)	(+0.127) (-0.000)	(+0.05) (-0.000)	(+0.000) (-0.254)	
1mm	RKTMJISPE010A	L	Opt. DL	12	1.127	4.3	4.03	18	0.13
1mm	RKTMJISPE010B	L	Opt. DL	12	1.127	5.3	4.03	18	0.13
1mm	RKTMJISPE010C	L	Opt. DL	12	1.127	6.3	4.03	18	0.13
1.5mm	RKTMJISPE015A	L	Opt. DL	12	1.627	5.3	4.03	18	0.13
1.5mm	RKTMJISPE015B	L	Opt. DL	12	1.627	6.3	4.03	18	0.13
1.5mm	RKTMJISPE015C	L	Opt. DL	12	1.627	6.3	4.03	18	0.13
2mm	RKTMJISPE020A	L	Opt. DL	12	2.127	5.3	4.03	18	0.13
2mm	RKTMJISPE020B	L	Opt. DL	12	2.127	6.3	4.03	18	0.13
2.5mm	RKTMJISPE025	L	Opt. DL	12	2.627	6.3	4.03	18	0.13
3mm	RKTMJISPE030	L	Opt. DL	12	3.127	6.3	4.03	18	0.13
3.5mm*	RKTMJISPE035	L	Opt. DL	12	3.627	7.3	4.03	18	0.13
4mm*	RKTMJISPE040	L	Opt. DL	16	4.127	8.3	6.03	22	0.13
4.5mm	RKTMJISPE045	L	Opt. DL	16	4.627	8.3	6.03	22	0.13
5mm	RKTMJISPE050	L	Opt. DL	16	5.127	9.3	6.03	22	0.13
5.5mm	RKTMJISPE055	L	Opt. DL	16	5.627	10.3	6.03	22	0.13
6mm	RKTMJISPE060	L	Opt. DL	18	6.127	10.3	6.03	24	0.13
6.5mm	RKTMJISPE065	L	Opt. DL	18	6.627	11.3	6.03	24	0.13
7mm	RKTMJISPE070	L	Opt. DL	18	7.127	11.3	6.03	24	0.13
8mm	RKTMJISPE080	L	Opt. DL	20	8.127	13.3	8.03	26	0.13
9mm	RKTMJISPE090	L	Opt. DL	20	9.127	15.3	8.03	26	0.13
10mm	RKTMJISPE100	L	Opt. DL	25	10.127	15.3	8.03	31	0.13
12mm	RKTMJISPE120	L	Opt. DL	25	12.127	17.3	8.03	31	0.13
15mm	RKTMJISPE150	L	Opt. DL	28	15.127	20.3	8.03	34	0.13
16mm	RKTMJISPE160	L	Opt. DL	28	16.127	21.3	8.03	34	0.13
18mm	RKTMJISPE180	L	Opt. DL	32	18.127	23.3	8.03	38	0.13
20mm	RKTMJISPE200	L	Opt. DL	32	20.127	25.3	8.03	38	0.13

Pairing KTM JIS Metric Sleeve Extension

(R&CB)KTMJISSE040,045
(R&CB)KTMJISSE040,045
(R&CB)KTMJISSE040,045
RKTMJISSE040, 045, 050A, 055A, 060, 065, 070, 080
CBKTMJISSE040, 045, 050, 055, 060A, 065A, 070A, 080A
(R&CB)KTMJISSE040,045,050,055,060A,065A,070A,080A
(R&CB)KTMJISSE050,055,060A,065A,070A,075A,080A
RKTMJISSE06B, 065B, 070B, 075B, 080B
CBKTMJISSE060C,065C,070C,075A,080C
(R&CB)KTMJISSE060B,065B,070B,075B,080B,100A,120A
(R&CB)KTMJISSE070B,075B,080B,100A,120A
(R&CB)KTMJISSE080B,100A,120A
(R&CB)KTMJISSE100A,120A
(R&CB)KTMJISSE100B,120B
(R&CB)KTMJISSE100B,120B
(R&CB)KTMJISSE120C
(R&CB)KTMJISSE150A
(R&CB)KTMJISSE150B
(R&CB)KTMJISSE200A
(R&CB)KTMJISSE200B



ORDERING FORMAT:

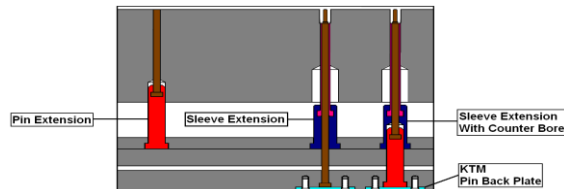


All Extensions can come with an optional Double Locking System.

Slot for Spring Pin to Lock Pin in place.

D Lock on head of extension to lock extension in plate.

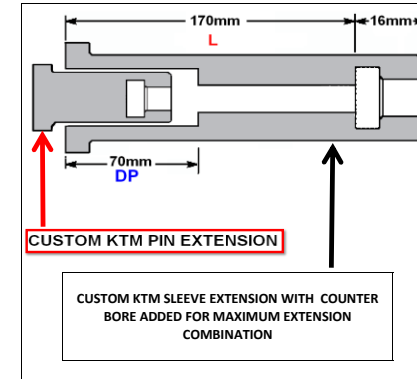
****Locking System can be Customized****



Sample Ordering Format:

Extending a 7mm Ejector Pin by 170mm
Call Out: RKTMJISPE070 - 170

Extending a 7mm Ejector Pin by 170mm with Double Lock
Call Out: RKTMJISPE070 - 170 - DL



Contact info@kingstool.com For Further Information.

Allow 2 1/2 Weeks for Custom Orders. Rush Delivery Available