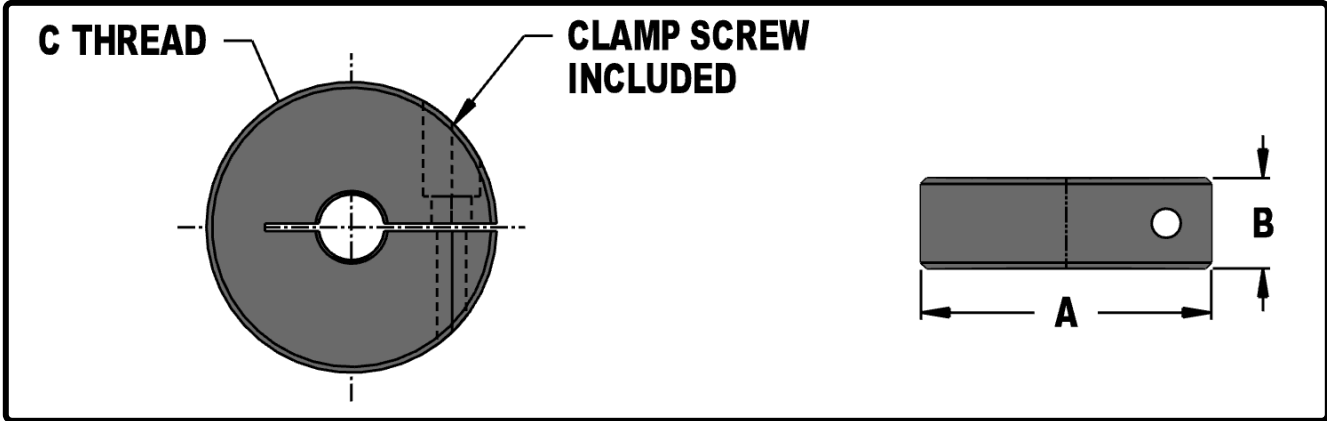


# Mold Components

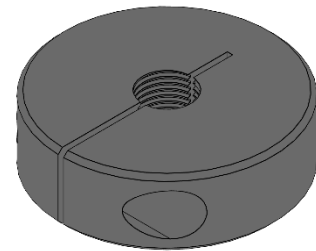
KTM Canada Head Office: 56 Steeles Ave. UNIT#35 Milton, ON Canada, L9T 4W9  
 Phone: (905) 878-3788 Fax: (905) 878-0900 Email: Info@kingstool.com Website: www.kingstool.com

## KTM Switch Dogs

Material: CRS

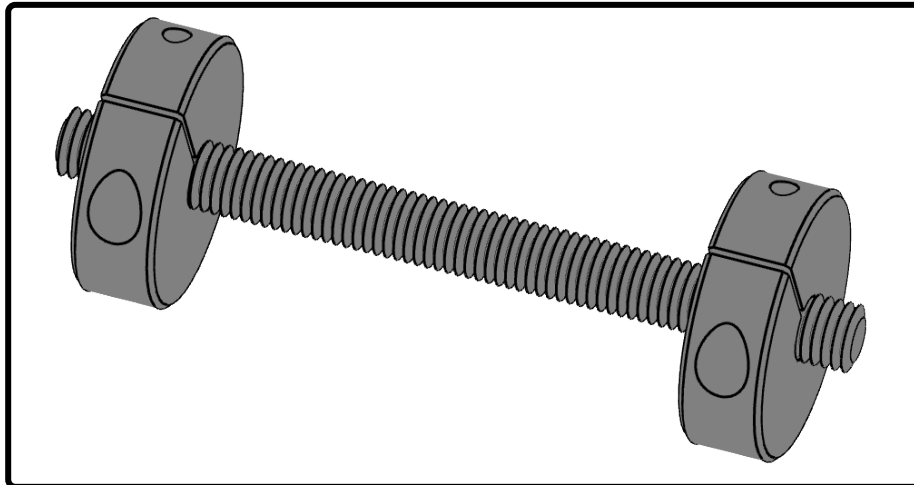


Catalogue Name	A	B	C
KSDS-1-5/16-24	1.00	0.38	5/16-24
KSDS-2-7/16-20	2.00	0.62	7/16-20
KSDS-2-1/2-20	2.00	0.62	1/2-20
KSDS-2.5-3/4-16	2.50	0.62	3/4-16
KSDS-50-M12x1.25	50.8mm	15.748mm	M12x1.25



## KTM Switch Dog Assembly

Material: CRS



L = Rod Length

KTM Stocked Rod Lengths are:  
 6" - 8" - 10" - 12" - 14"

Sample Ordering Format:  
 Ordering Assembly with  
 5/16"-24 Rod 6" in Length:  
 KSDS-7999-6

For Custom length, please  
 indicate L and contact KTM  
 for cost and delivery

Catalogue Name	Threaded Rod Size
KSDS-7999-L	5/16" - 24
KSDS-8000-L	7/16" - 20
KSDS-8003-L	1/2" - 20
KSDS-8005-L	3/4" - 16

Assembly Includes Two Switch Dogs and One Threaded Rod