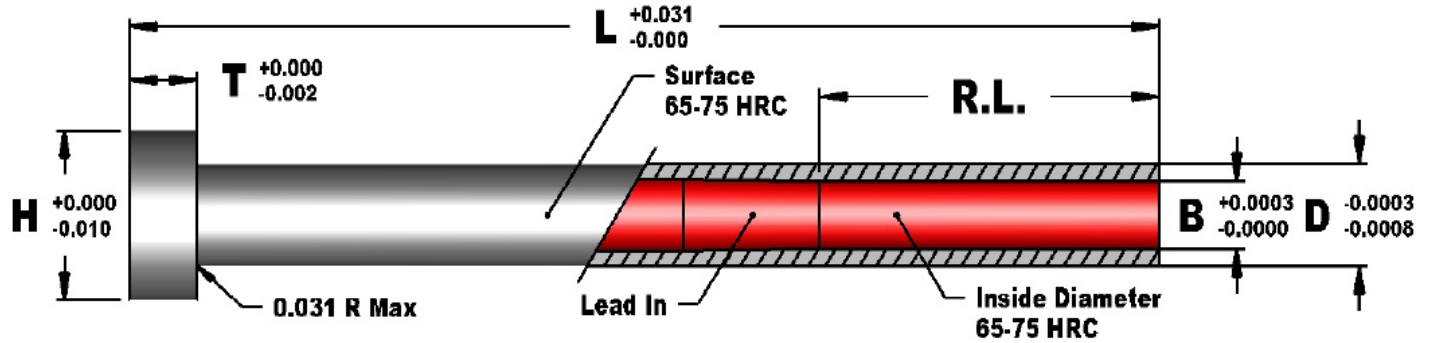


# Mold Component

KTM Canada Head Office: 56 Steeles Ave. UNIT#35 Milton, ON Canada, L9T 4W9  
 Phone: (905) 878-3788 Fax: (905) 878-0900 Email: Info@kingstool.com Website: www.kingstool.com

## KTM IMPERIAL NITRIDED SLEEVES

Material: (1.2344, H13, SKD61)



| Catalogue Name | B    | D     | H     | T     | (L) Length                          |
|----------------|------|-------|-------|-------|-------------------------------------|
| EJS093         | 3/32 | 3/16  | 0.375 | 0.187 | Standard & Custom Lengths Available |
| EJS125         | 1/8  | 7/32  | 0.406 | 0.187 |                                     |
| EJS156         | 5/32 | 1/4   | 0.437 | 0.187 |                                     |
| EJS187         | 3/16 | 5/16  | 0.500 | 0.250 |                                     |
| EJS203         | 7/32 | 11/32 | 0.562 | 0.250 |                                     |
| EJS250         | 1/4  | 3/8   | 0.625 | 0.250 |                                     |
| EJS312         | 5/16 | 7/16  | 0.687 | 0.250 |                                     |
| EJS375         | 3/8  | 1/2   | 0.750 | 0.250 |                                     |
| EJS437         | 7/16 | 5/8   | 0.875 | 0.250 |                                     |
| EJS500         | 1/2  | 11/16 | 0.937 | 0.250 |                                     |
| EJS562         | 9/16 | 3/4   | 1.000 | 0.250 |                                     |
| EJS625         | 5/8  | 7/8   | 1.125 | 0.250 |                                     |
| EJP750         | 3/4  | 1"    | 1.250 | 0.250 |                                     |

**Sample Ordering Format:**

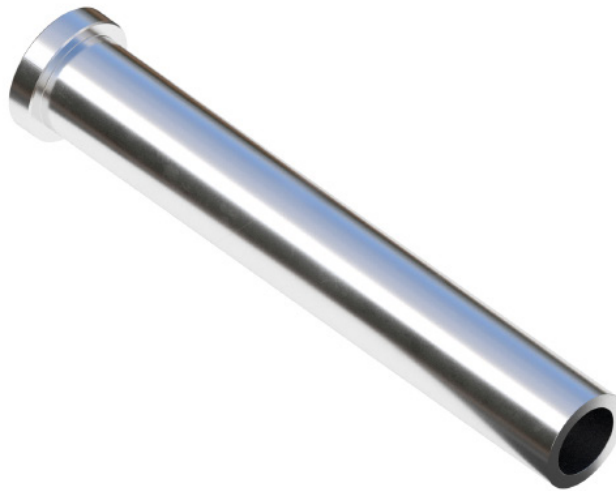
To order a 1/2" I.D Ejector Pin Sleeve in 6" inches length:

Catalogue Name (L) Length

**EJS500** - **6**

**Notes For R.L.**

Standard Bearing Ream Length  
 ID 0.25" and Smaller = 1.75"  
 ID Greater Than 0.25" = 2"  
 Can be customized



**CONTACT KTM FOR METRIC OR CUSTOM NITRIDED SLEEVES**