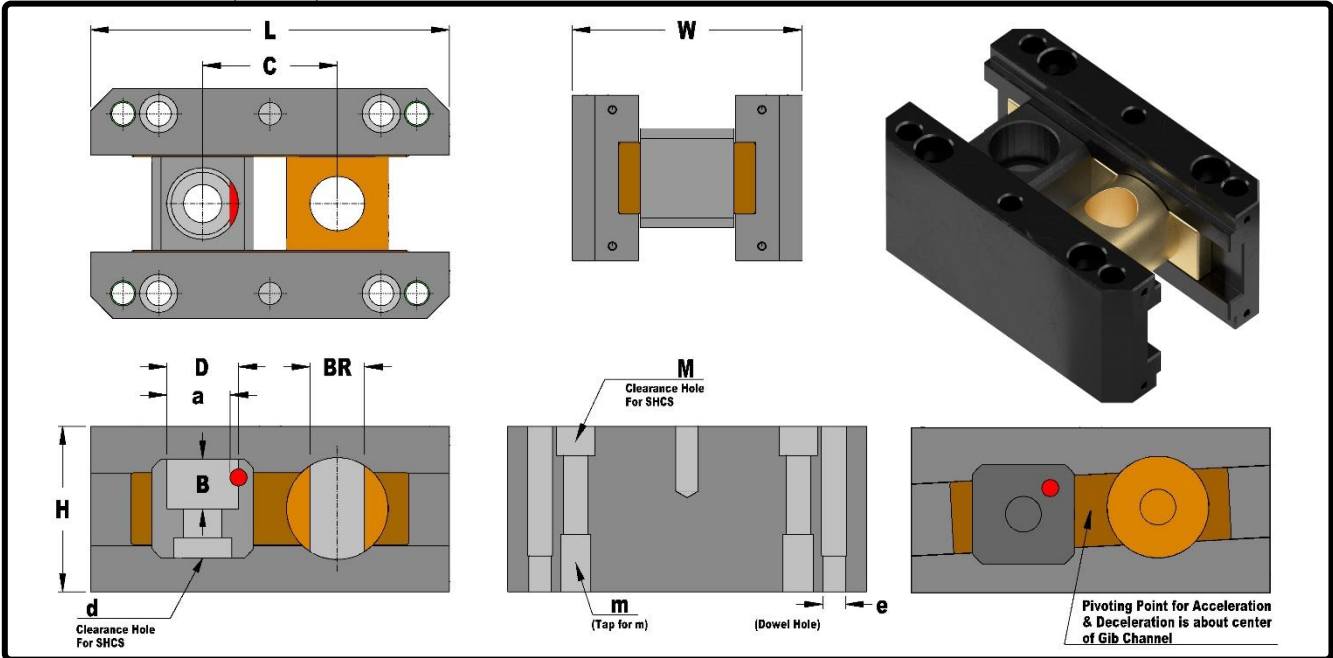


# Mold Components

KTM Canada Head Office: 56 Steeles Ave. UNIT#35 Milton, ON Canada, L9T 4W9  
 Phone: (905) 878-3788 Fax: (905) 878-0900 Email: Info@kingstool.com Website: www.kingstool.com

## KTM KLCA FX Buddy Rod Lifter Carriage Assembly

Material: S45C, 4140, Aluminum Bronze



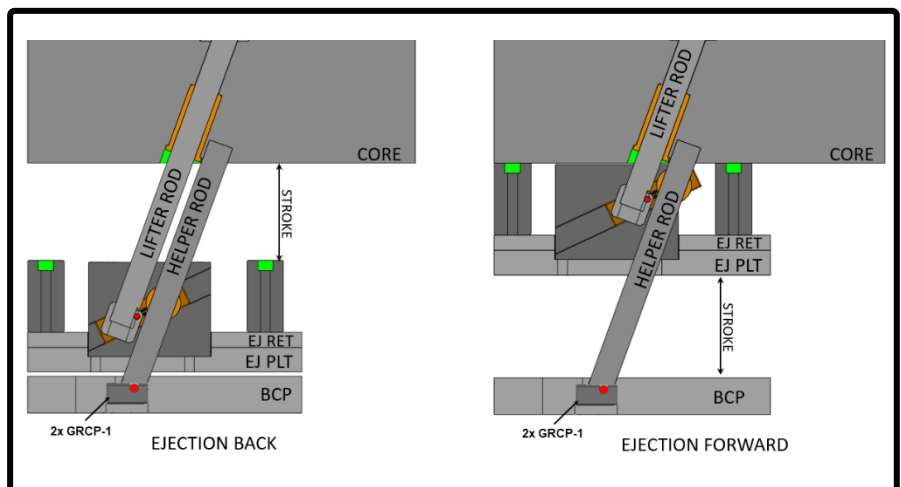
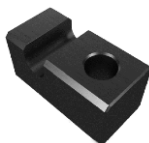
Imperial (Inch)													
Catalogue Name	D	B	BR	C	a	W	L	H	d	M	m	e	Max Accel/Decel
75 KLCA-FX-BR-5L-XXX	0.750"	0.780"	0.760"	1.875"	0.630"	3.2"	5"	1.8"	3/8 SHCS	5/16 SHCS	1/2-13" NC	5/16"	7 °
75 KLCA-FX-BR-5L-2.3H-XXX	0.750"	0.780"	0.760"	1.875"	0.630"	3.2"	5"	2.3"	3/8 SHCS	5/16 SHCS	1/2-13" NC	5/16"	10 °
75 KLCA-FX-BR-5L-3.875H-XXX	0.750"	0.780"	0.760"	1.875"	0.630"	3.2"	5"	3.875"	3/8 SHCS	5/16 SHCS	1/2-13" NC	5/16"	25 °
100 KLCA-FX-BR-5L-XXX	1.000"	0.689"	1.010"	1.875"	0.880"	3.2"	5"	1.8"	1/2 SHCS	5/16 SHCS	1/2-13" NC	5/16"	7 °
100 KLCA-FX-BR-5L-2.3H-XXX	1.000"	0.689"	1.010"	1.875"	0.880"	3.2"	5"	2.3"	1/2 SHCS	5/16 SHCS	1/2-13" NC	5/16"	10 °
100 KLCA-FX-BR-5L-3.875H-XXX	1.000"	0.689"	1.010"	1.875"	0.880"	3.2"	5"	3.875"	1/2 SHCS	5/16 SHCS	1/2-13" NC	5/16"	25 °

Metric (mm)													
Catalogue Name	D	B	BR	C	a	W	L	H	d	M	m	e	Max Accel/Decel
M20 KLCA-FX-BR-127L-58H-XXX	20mm	20mm	20.3mm	47.63mm	17mm	81.3mm	127mm	58mm	M10 SHCS	M8 SHCS	M10x1.5	8mm	10 °
M20 KLCA-FX-BR-127L-98H-XXX	20mm	20mm	20.3mm	47.63mm	17mm	81.3mm	127mm	98mm	M10 SHCS	M8 SHCS	M10x1.5	8mm	25 °
M25 KLCA-FX-BR-127L-58H-XXX	25mm	20.5mm	25.3mm	47.63mm	22mm	81.3mm	127mm	58mm	M12 SHCS	M8 SHCS	M10x1.5	8mm	10 °
M25 KLCA-FX-BR-127L-98H-XXX	25mm	20.5mm	25.3mm	47.63mm	22mm	81.3mm	127mm	98mm	M12 SHCS	M8 SHCS	M10x1.5	8mm	25 °

Accel & Decel Order Format	Equivalent
100 KLCA-FX-BR-5L-005	0.5 °
100 KLCA-FX-BR-5L-05	5 °
100 KLCA-FX-BR-5L-055	5.5 °
100 KLCA-FX-BR-5L-10	10 °

**Note:**

- For Graphite Impregnated Aluminum Bronze, add G in front of the KLCA in the catalog name.  
 Example: 100 GKLCA-FX-BR-5L-05
- Helper rod can be mounted to the bottom clamp plate (BCP) with our [KTM-GRCP-1](#).



**CONTACT KTM TO REQUEST FOR 3D FILES OR FOR CUSTOM LIFTER CARRIAGE ANGLES**  
**CONTACT KTM TO REQUEST FOR CUSTOMIZATION OF LIFTER CARRIAGE ASSMBLIES**