

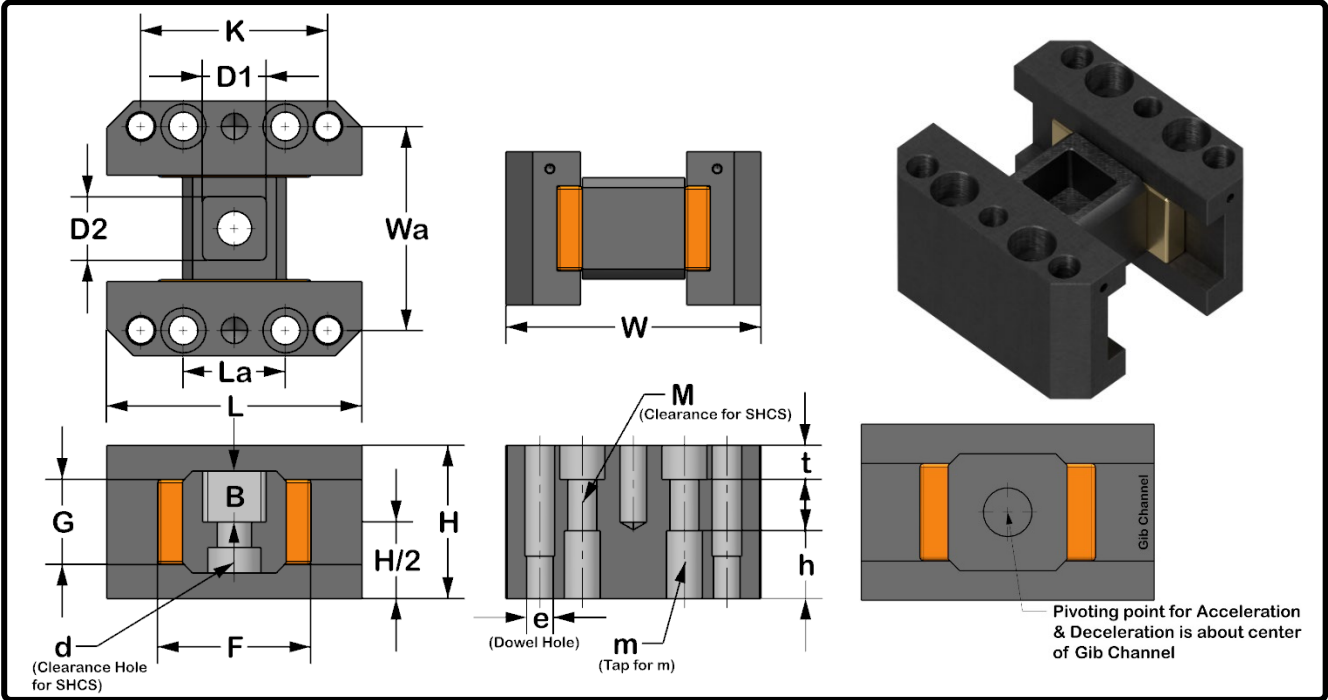


Mold Components

KTM Canada Head Office: 56 Steeles Ave. UNIT#35 Milton, ON Canada, L9T 4W9
Phone: (905) 878-3788 Fax: (905) 878-0900 Email: Info@kingstool.com Website: www.kingstool.com

KTM Uni-Lifter Series Lifter Carriage Assembly

Material: S45C, 4140, Aluminum Bronze



Imperial (Inch)																		
Catalogue Name	D1	D2	B	W	Wa	L	La	K	H	h	F	G	d	t	M	m	e	
75 KLCA-UL-XXX	0.750"	0.750"	0.6"	3.0"	2.400"	3.0"	1.20"	2.2"	1.8"	0.8"	1.8"	1.00"	3/8 SHCS	0.40"	5/16 SHCS	1/2-13" NC	5/16"	
100 KLCA-UL-XXX	1.000"	1.000"	0.6"	3.2"	2.500"	3.4"	1.50"	2.5"	1.8"	0.8"	2.0"	1.00"	1/2 SHCS	0.40"	5/16 SHCS	1/2-13" NC	5/16"	

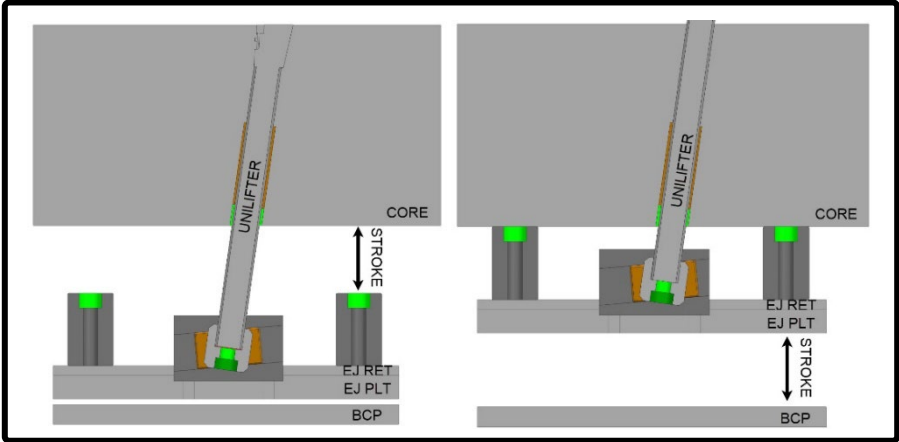
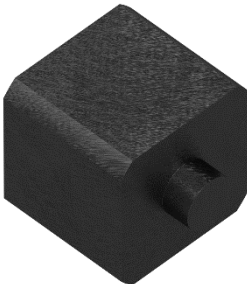
Accel & Decel Order Format	Equivalent
75 KLCA-UL-005	0.5 Degree
75 KLCA-UL-05	5 Degree
75 KLCA-UL-055	5.5 Degree
75 KLCA-UL-10	10 Degree

Contact KTM for angles above 10 Degree

Note:

- For Graphite Impregnated Aluminum Bronze, add G in front of the catalogue name.
Example: 75 GKLCA-UL-01

Blanks Swivels are available to be purchase for custom size Unilifter Bars. Contact KTM for more information



CONTACT KTM TO REQUEST FOR 3D FILES OR FOR CUSTOM LIFTER CARRIAGE ANGLES
CONTACT KTM TO REQUEST FOR CUSTOMIZATION OF LIFTER CARRIAGE ASSEMBLIES