

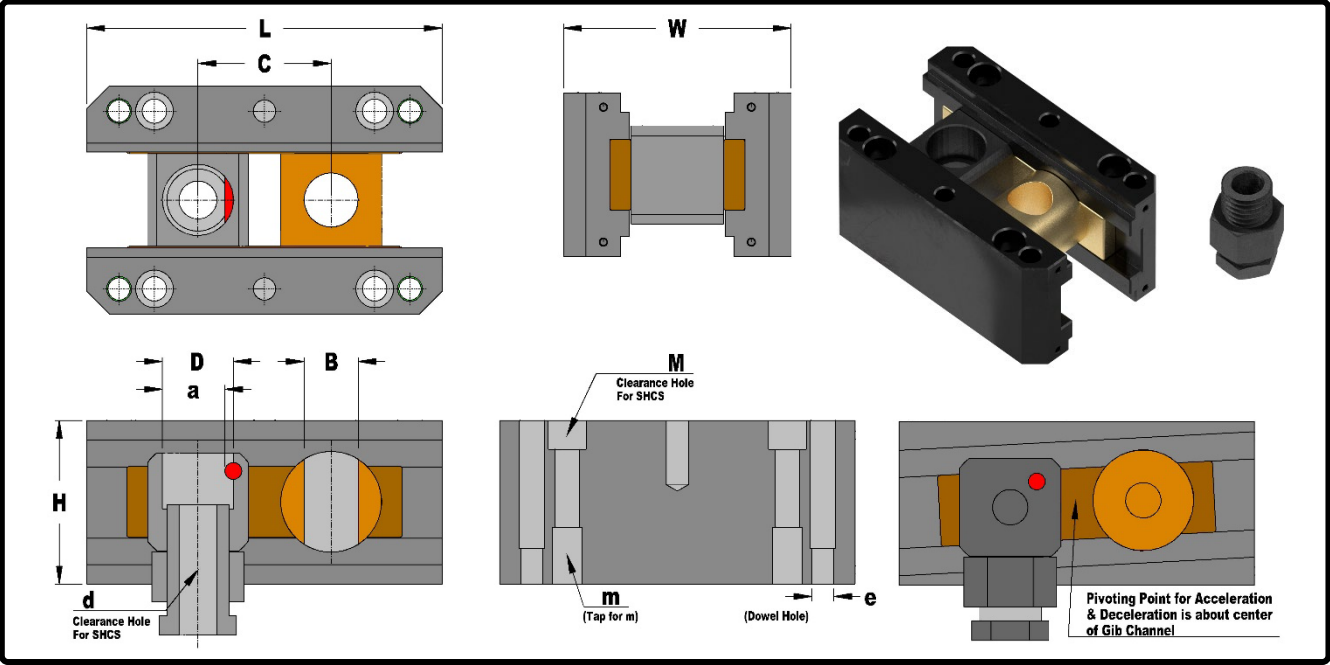


Mold Components

KTM Canada Head Office: 56 Steeles Ave. UNIT#35 Milton, ON Canada, L9T 4W9
 Phone: (905) 878-3788 Fax: (905) 878-0900 Email: Info@kingstool.com Website: www.kingstool.com

KTM KLCA Buddy Rod Lifter Carriage Assembly

Material: S45C, 4140, Aluminum Bronze



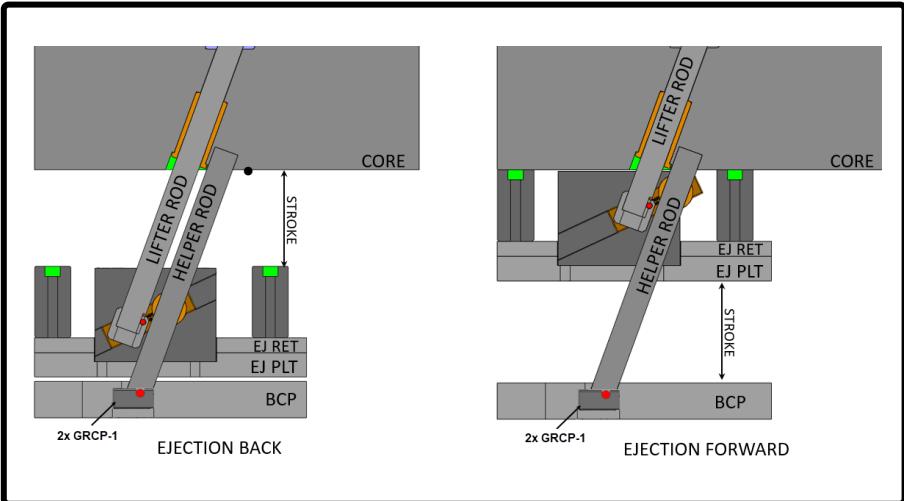
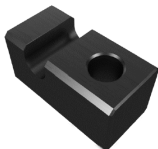
| Imperial (Inch) | | | | | | | | | | | | |
|---------------------------|--------|--------|--------|--------|------|----|--------|----------|-----------|------------|-------|-------------------|
| Catalogue Name | D | BR | C | a | W | L | H | d | M | m | e | Accel/Decel Range |
| 75 KLCA-BR-5L-XXX | 0.750" | 0.760" | 1.875" | 0.630" | 3.2" | 5" | 1.8" | 3/8 SHCS | 5/16 SHCS | 1/2-13" NC | 5/16" | 0 to 7 ° |
| 75 KLCA-BR-5L-2.3H-XXX | 0.750" | 0.760" | 1.875" | 0.630" | 3.2" | 5" | 2.3" | 3/8 SHCS | 5/16 SHCS | 1/2-13" NC | 5/16" | 8 to 10 ° |
| 75 KLCA-BR-5L-3.875H-XXX | 0.750" | 0.760" | 1.875" | 0.630" | 3.2" | 5" | 3.875" | 3/8 SHCS | 5/16 SHCS | 1/2-13" NC | 5/16" | 11 to 25 ° |
| 100 KLCA-BR-5L-XXX | 1.000" | 1.010" | 1.875" | 0.880" | 3.2" | 5" | 1.8" | 1/2 SHCS | 5/16 SHCS | 1/2-13" NC | 5/16" | 0 to 7 ° |
| 100 KLCA-BR-5L-2.3H-XXX | 1.000" | 1.010" | 1.875" | 0.880" | 3.2" | 5" | 2.3" | 1/2 SHCS | 5/16 SHCS | 1/2-13" NC | 5/16" | 8 to 10 ° |
| 100 KLCA-BR-5L-3.875H-XXX | 1.000" | 1.010" | 1.875" | 0.880" | 3.2" | 5" | 3.875" | 1/2 SHCS | 5/16 SHCS | 1/2-13" NC | 5/16" | 11 to 25 ° |

| Metric (mm) | | | | | | | | | | | | |
|--------------------------|------|--------|---------|------|--------|-------|---------|----------|---------|---------|-----|-------------------|
| Catalogue Name | D | BR | C | a | W | L | H | d | M | m | e | Accel/Decel Range |
| M20 KLCA-BR-127L-58H-XXX | 20mm | 20.3mm | 47.63mm | 17mm | 81.3mm | 127mm | 58.42mm | M10 SHCS | M8 SHCS | M10x1.5 | 8mm | 0 to 10 ° |
| M20 KLCA-BR-127L-98H-XXX | 20mm | 20.3mm | 47.63mm | 17mm | 81.3mm | 127mm | 98.43mm | M10 SHCS | M8 SHCS | M10x1.5 | 8mm | 11 to 25 ° |
| M25 KLCA-BR-127L-58H-XXX | 25mm | 25.3mm | 47.63mm | 22mm | 81.3mm | 127mm | 58.42mm | M12 SHCS | M8 SHCS | M10x1.5 | 8mm | 0 to 10 ° |
| M25 KLCA-BR-127L-98H-XXX | 25mm | 25.3mm | 47.63mm | 22mm | 81.3mm | 127mm | 98.43mm | M12 SHCS | M8 SHCS | M10x1.5 | 8mm | 11 to 25 ° |

| Accel & Decel Order Format | Equivalent |
|----------------------------|------------|
| 75 KLCA-BR-5L-005 | 0.5 ° |
| 75 KLCA-BR-5L-05 | 5 ° |
| 75 KLCA-BR-5L-055 | 5.5 ° |
| 75 KLCA-BR-5L-10 | 10 ° |

Note:

- For Graphite Impregnated Aluminum Bronze, add G in front of the KLCA in the catalog name.
 Example: 75 GKLCA-BR-5L-05
- Helper rod can be mounted to the bottom clamp plate (BCP) with our [KTM-GRCP-1](#).



CONTACT KTM TO REQUEST FOR 3D FILES OR FOR CUSTOM LIFTER CARRIAGE ANGLES
CONTACT KTM TO REQUEST FOR CUSTOM SIZES LIFTER CARRIAGE ASSMBLIES