

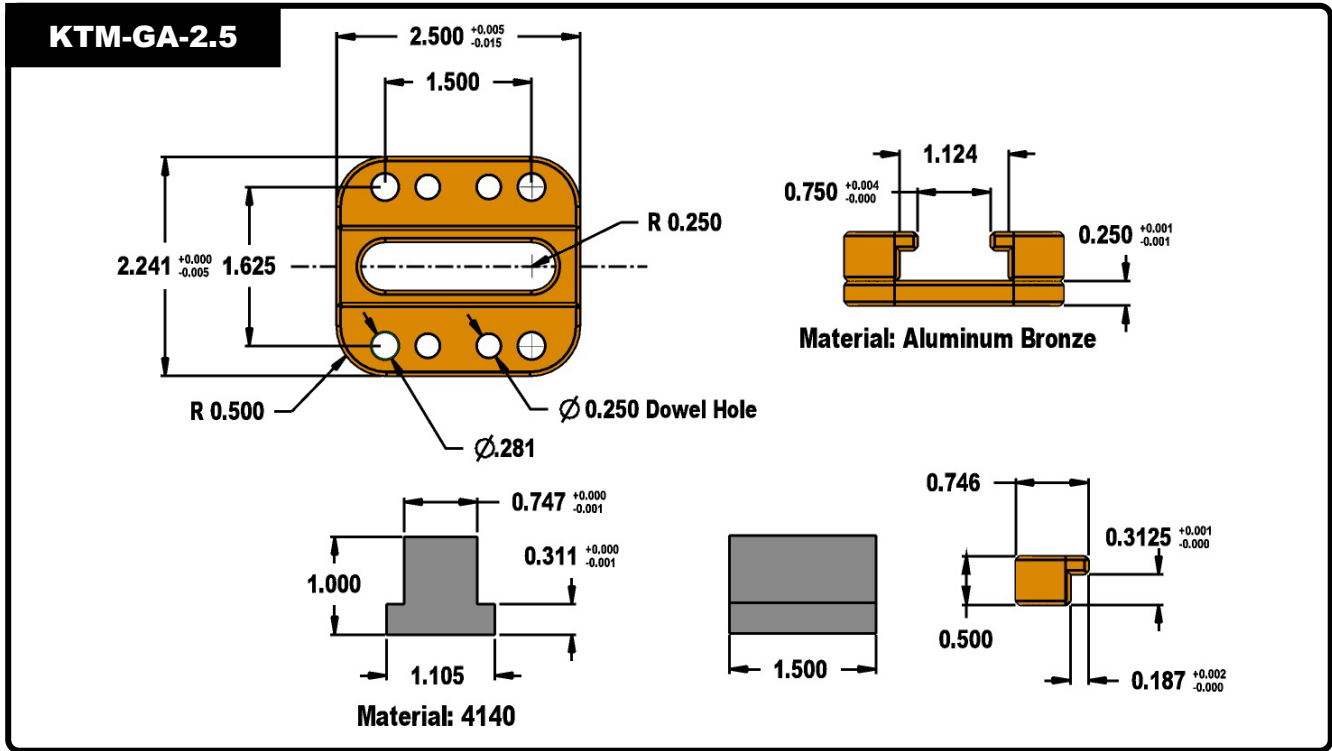


Mold Components

KTM Canada Head Office: 56 Steeles Ave. UNIT#35 Milton, ON Canada, L9T 4W9
 Phone: (905) 878-3788 Fax: (905) 878-0900 Email: Info@kingstool.com Website: www.kingstool.com

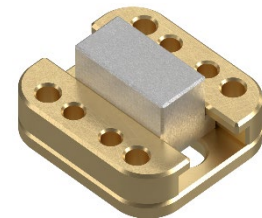
KTM Gib 2.5 Assembly

Material: Aluminum Bronze, 4140

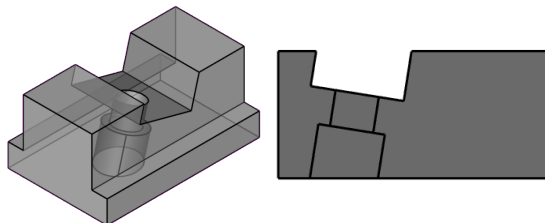


Features:

- **Gib Assembly Includes:**
 - 2 L-Gibs, 1 Base Plate, 1 T-Nut
- **Assembly comes pre-doweled and pre-drilled clearance for mounting screws**
- **Base plate is machined with thru hole for ease of assembly**
- **Tolerances +/- 0.010" unless otherwise specified**



KTM Custom T-Nuts



Gib Assemblies can be order with custom T-Nuts to fit in KTM Gib Assemblies. KTM will pre-mill your lifter rod angle slot and pre counter-bore for your SHC screw. Your Gib Assembly will come complete ready to use.

Please contact us for further information