



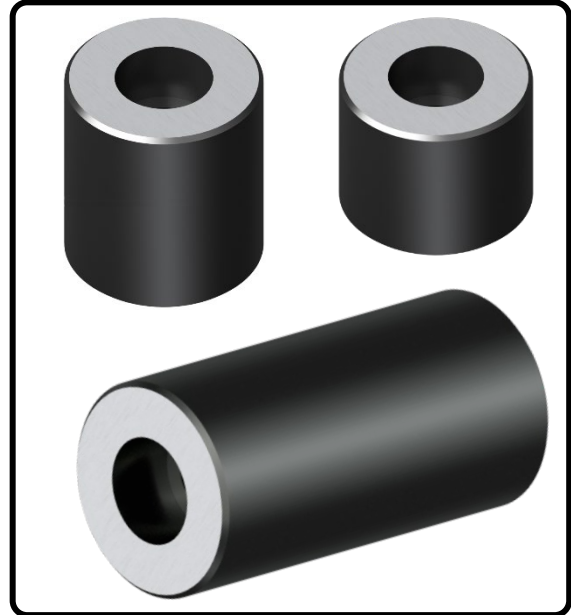
# Mold Components

KTM Canada Head Office: 56 Steeles Ave. UNIT#35 Milton, ON Canada, L9T 4W9  
 Phone: (905) 878-3788 Fax: (905) 878-0900 Email: Info@kingstool.com Website: www.kingstool.com

## KTM Stop buttons / Ejector box stops / Stop spacers

### Imperial:

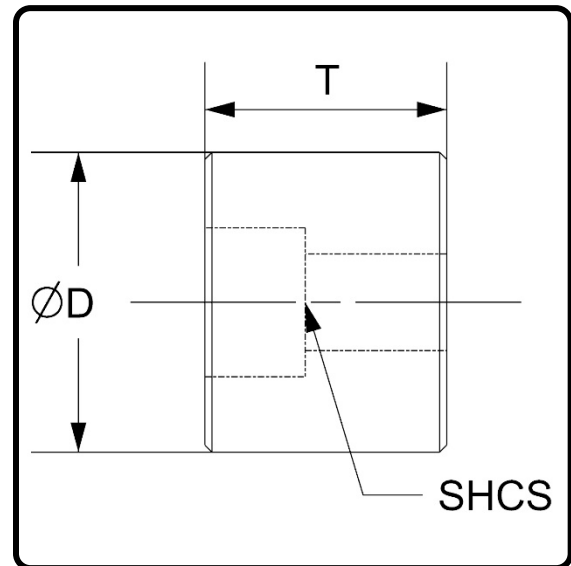
**Material:** Round Bar Steel  
**Grinding Stock:** 0.005" grind stock on nominal dimension  
**Thickness Tolerance:** +0.005"/-0.000"  
 Prevents ejector plates from crashing into mold.



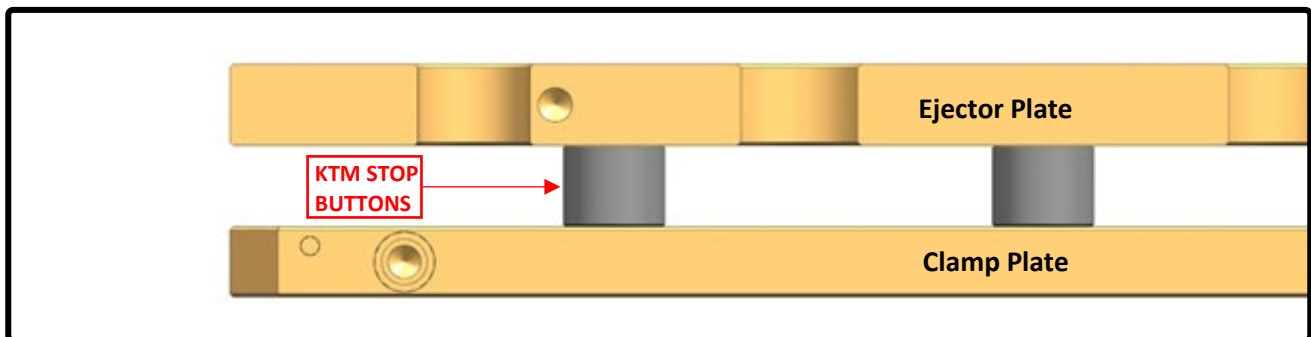
Catalog Name	D	T	Clearance for SHCS
KTM-SB-0.375	0.87"	0.375"	1/4 SHCS
KTM-SB-1.0	1.25"	1.000"	3/8 SHCS
KTM-SB-2.0		2.000"	
KTM-SB-2.5		2.500"	
KTM-SB-3.0	1.50"	3.000"	
KTM-SB-4.0		4.000"	

### Metric:

**Material:** Round Bar Steel  
**Grinding Stock:** 0.13mm grind stock on nominal dimension  
**Thickness Tolerance:** +0.13mm/-0.00mm  
 Prevents ejector plates from crashing into mold.



Catalog Name	D	T	Clearance for SHCS
KTM-SB-10	20mm	10mm	M6 SHCS
KTM-SB-25	32mm	25mm	M10 SHCS
KTM-SB-50		50mm	
KTM-SB-75		75mm	
KTM-SB-100	38mm	100mm	



Contact KTM for 3D Data & Custom Sizes