

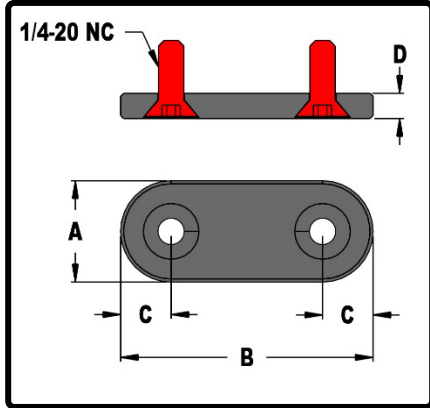


# Mold Components

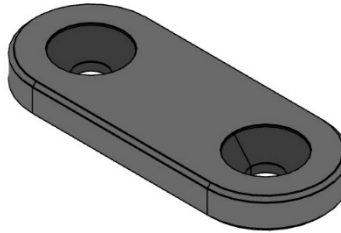
KTM Canada Head Office: 56 Steeles Ave. UNIT#35 Milton, ON Canada, L9T 4W9  
 Phone: (905) 878-3788 Fax: (905) 878-0900 Email: Info@kingstool.com Website: www.kingstool.com

## KTM Core Pin Back Plate/Wire Channel Cover Plates

Material: CRS

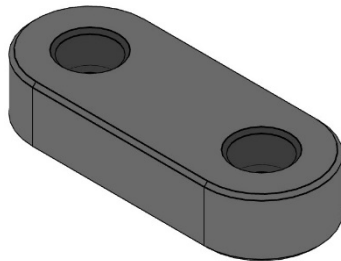


Catalogue Name	Description	A	B	C	D
<b>PBP-75x175</b>	0.75" x 1.75" for Two 1/4-20 NC Screw	0.75"	1.75"	0.375"	0.25"
<b>PBP-1x2.50</b>	1.00" x 2.50" for Two 1/4-20 NC Screw	1.00"	2.50"	0.50"	0.25"
<b>PBP-1x2.75</b>	1.00" x 2.75" for Two 1/4-20 NC Screw	1.00"	2.75"	0.50"	0.25"
<b>PBP-1x3.25</b>	1.00" x 3.25" for Two 1/4-20 NC Screw	1.00"	3.25"	0.50"	0.25"
<b>PBP-1x3.75</b>	1.00" x 3.75" for Two 1/4-20 NC Screw	1.00"	3.75"	0.50"	0.25"

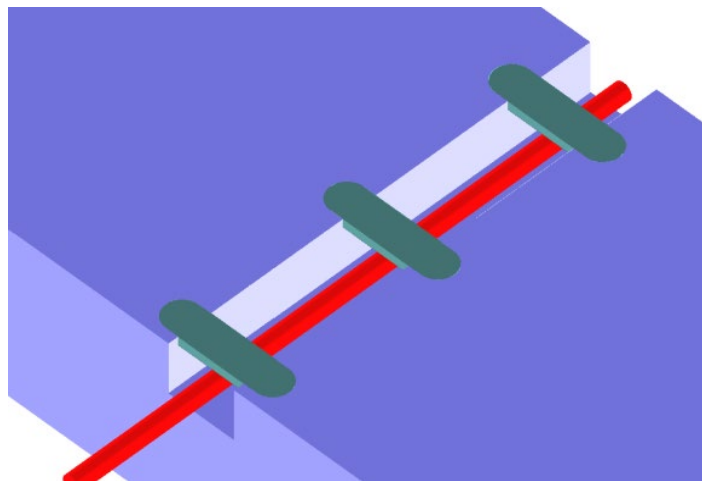
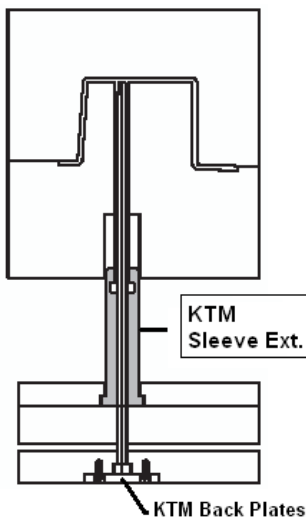
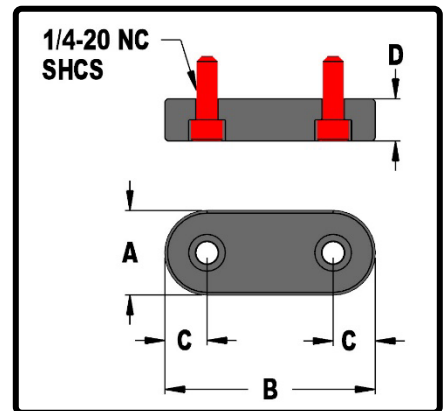


Tolerance:  
 ±0.010" unless otherwise specified.  
 0.00/-0.015" on 0.25" thickness

Catalogue Name	Description	A	B	C	D
<b>PBPA-1x2.50</b>	1.00" x 2.50" for Two 1/4-20 NC SHCS	1.00"	2.50"	0.50"	0.50"
<b>PBPA-1x3.75</b>	1.00" x 3.75" for Two 1/4-20 NC SHCS	1.00"	3.75"	0.50"	0.50"



Tolerance:  
 ±0.010" unless otherwise specified.  
 0.00/-0.015" on D dimension



**CONTACT KTM TO REQUEST FOR 3D FILES AND FOR MORE INFORMATION**